

Model 800AJ

ARTICULATING BOOM LIFTS



MORE ECONOMIC

- Lower hydrocarbon, carbon monoxide, particulate and NOx emissions with Stage IV-compliant engine.

MORE PRODUCTIVE

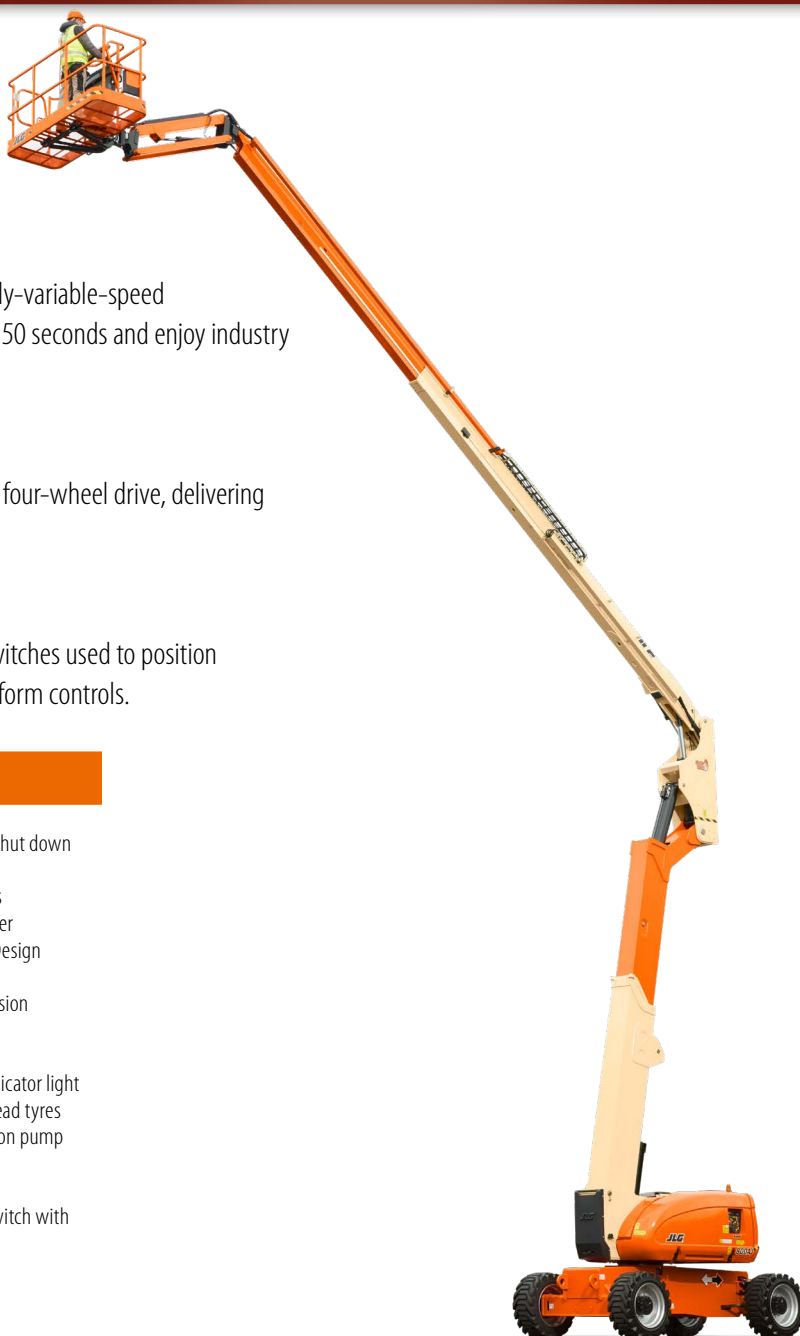
- Equipped with hydrostatic drive for easy, precise, infinitely-variable-speed manoeuvrability. Go from ground to over 26 m in under 50 seconds and enjoy industry best reach envelope with exclusive QuikStik® boom.

MORE ACCESS

- Conquer rough terrain with standard oscillating axle and four-wheel drive, delivering optimised grip and stability.

SMART DESIGN

- Customer-preferred controls mean fewer buttons and switches used to position the platform and less time spent learning to use the platform controls.



Standard Features

- 0.91 m x 1.83 m low mount platform
- Side entry with drop bar mid rail
- Multiple function operation
- Full proportional drive joystick control with integral thumb steer switch
- Full proportional main boom and swing joystick control
- Multiple speed control for lower boom, telescope and platform rotate
- Selectable creep speed on drive / lift and swing functions
- 1.83 m articulating jib
- 180 degree powered platform rotator
- Platform console machine status light panel¹
- Load sensing system
- AC power cable to platform
- Deutz D2011 L04 (46kW) diesel engine
- Engine distress warning /shut down system²
- Gull-wing turntable hoods
- Spark arresting type muffler
- Control ADE® (Advanced Design Electronics) System
- Hydrostatic drive transmission
- Horn
- QuikStik® boom design
- 4 degree tilt alarm and indicator light
- 18 - 625 foam filled lug tread tyres
- Load sensing boom function pump
- Lifting/tie down lugs
- Hour meter
- Ground control selector switch with key lock
- Catalytic purifier muffler
- Platform tool tray
- 12V-DC auxiliary power

Standard Specifications

- | | |
|----------------------|------------------------|
| • Diesel Engine | Deutz D2011 L04 (46kW) |
| • Fuel Tank Capacity | 151 L |
| • Hydraulic System | 261 L |
| • Auxiliary Power | 12V DC |
| • Tyres | 18 - 625 (Foam Filled) |

Accessories & Options

- 0.91 m x 2.44 m low mount platform
- 0.76 m x 0.91 m low mount platform, rear entry³
- Tri entry 0.91 m x 1.83 m low mount platform
- Side entry with inward swing gate
- 13 mm air line to platform
- Swing-out engine tray
- Four wheel drive
- Four wheel steer/Two wheel steer/ Crab steer³
- 15 - 625 foam filled lug tread tyres Non Marking
- Oscillating front axle
- On-board 4,000W generator
- SkyPower® package 7,500 watt on-board generator
- SkyWelder® package 250 amp welder in the platform⁴
- Tow package
- All motion alarm
- Light package⁶
- Platform worklights
- Head and tail lights
- Flashing amber beacon
- Plugs & Sockets
- Hostile environment package⁷
- Hydraulic oil cooler
- Skyguard with beacon
- Skyguard without beacon
- Corner storage tray
- ClearSky Locate
- ClearSky CAN

¹ Provides indicator lights at platform control console for system distress, low fuel, tilt light, and foot switch status.
² Low oil pressure and high coolant temperature alarms with shut-down enabled/disabled by analyser.
³ Only available with four wheel drive on models 600A and 600AJ with 2.49m wide chassis and 800A and 800AJ.
⁴ Available when integrated with the SkyPower™ package
⁵ Consists of six 40-watt lights, four turntable mounted lights and two platform mounted lights.
⁶ Includes platform mounted work lights and head & tail lights.
⁷ Includes console cover, boom wipers and cylinder bellows.
⁸ Available only with drop bar type entry

Model 800AJ

ARTICULATING BOOM LIFTS

Performance

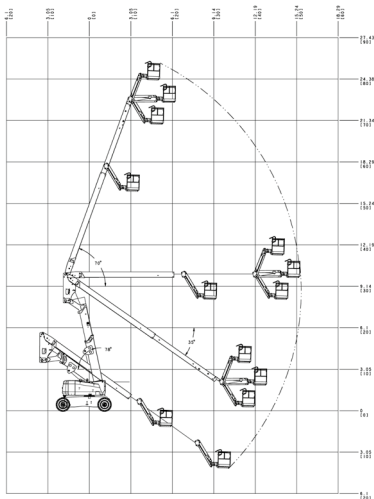
• Working Height	26.38 m
• Platform Height	24.38 m
• Horizontal Outreach	15.80 m
• Working Outreach **	16.45 m
• Up and Over Height	9.78 m
• Swing	360° (Continuous)
• Platform Capacity (Unrestricted)	230 kg
• Platform Rotator (Hydraulic)	180°
• Jib - Overall Length	1.83 m
• Jib - Range of articulation	130° (+70°/ -60°)
A. Platform Size	0.91 m x 1.83 m
B. Overall Width (Axles Retracted)	2.49 m
C. Tailswing (working condition)	0.76 m
D. Stowed Height	3.00 m
E. Stowed Length	11.13 m
F. Wheelbase	3.05 m
G. Ground Clearance	0.28 m
• Machine weight *	16,110 kg
• Maximum Ground Bearing Pressure	5.30 kg/cm ²
• Drive Speed 2WD	4.8 km/h
• Drive Speed 4WD	4.8 km/h
• Gradeability 2WD	30%
• Gradeability 4WD	45%
• Axle Oscillation	0.20 m
• Turning Radius – Inside	3.81 m 2WS 1.83 m 4WS
• Turning Radius – Outside	6.02 m 2WS 3.53 m 4WS

* Certain options or country standards may increase weight and/or dimensions

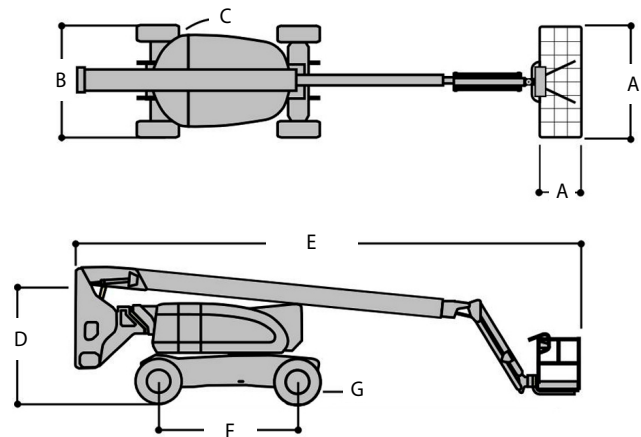
** Incl. 0.65 m outreach beyond platform

*** Optional

Reach Diagram



Dimensions



IMPORTANT

JLG is continually researching and developing products and reserves the right to make modifications without prior notice. All data in this document is indicative. Certain options or country standards will increase weight. Specifications may change to meet country standards or with the addition of optional equipment.

Due to continuous product improvements, JLG Industries reserves the right to make specification and/or equipment changes without prior notification.



JLG EMEA BV

Polaris Avenue 63
2132 JH Hoofddorp
The Netherlands
Phone: +31 (0)23 565 5665
www.jlg.com

An Oshkosh Corporation Company