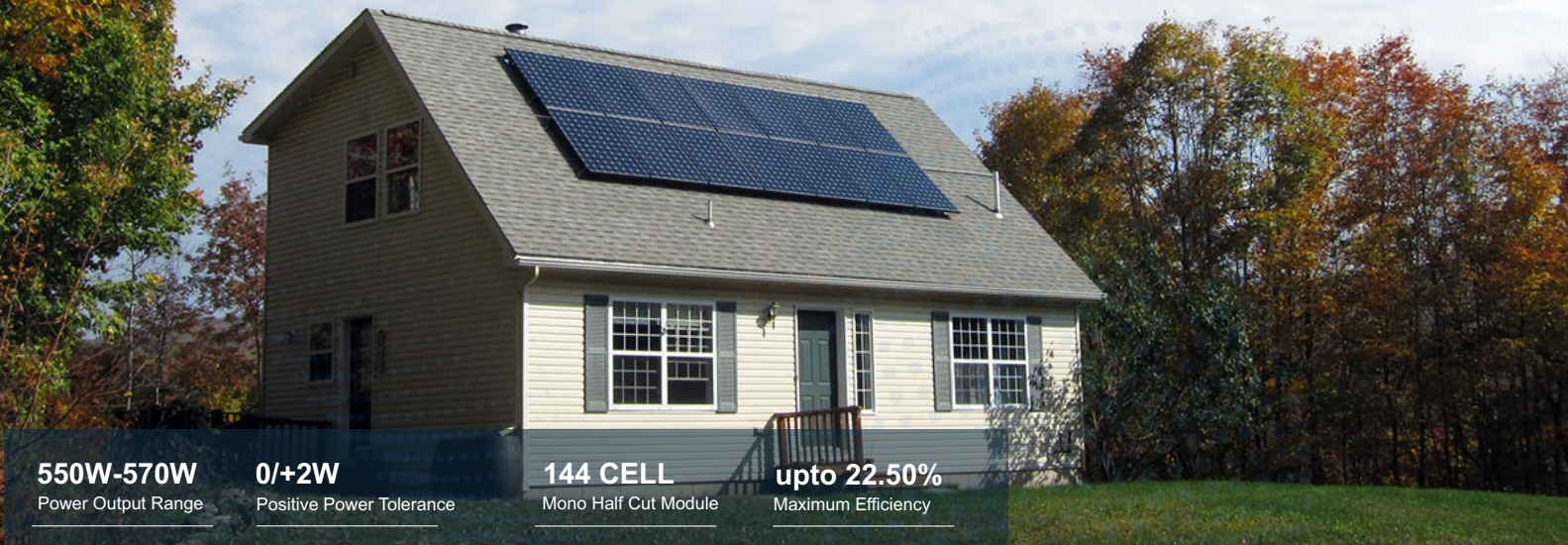


SENZA[®] SOLAR

M10 MONOFACIAL MODULE

550WP-570WP

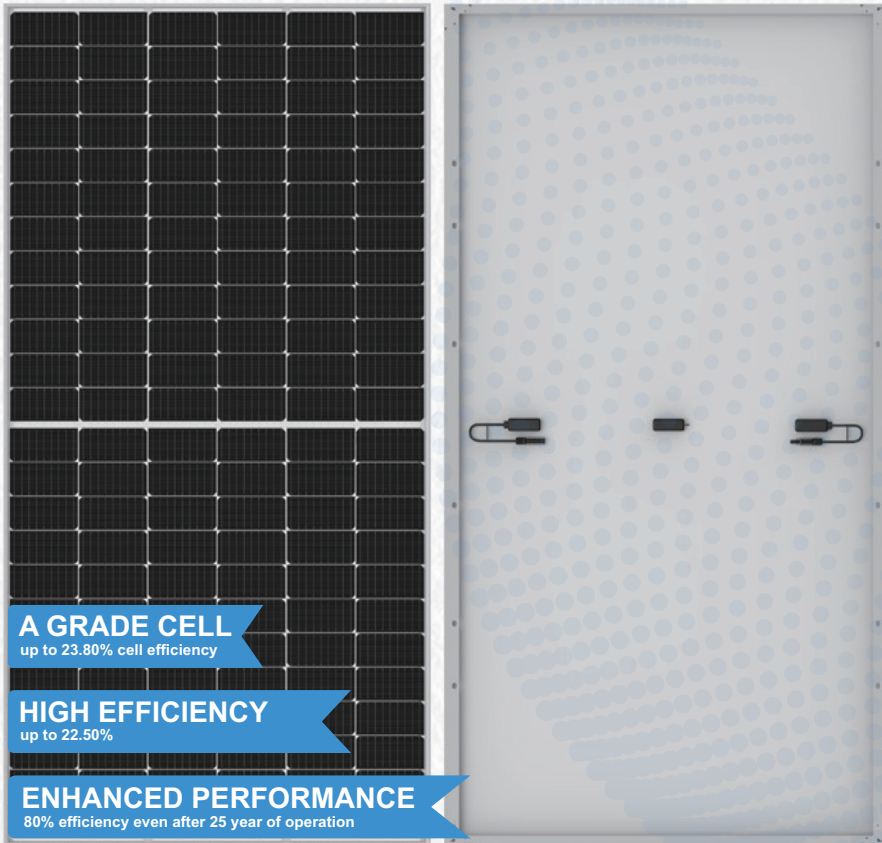


550W-570W
Power Output Range

0/+2W
Positive Power Tolerance

144 CELL
Mono Half Cut Module

upto 22.50%
Maximum Efficiency



A GRADE CELL
up to 23.80% cell efficiency

HIGH EFFICIENCY
up to 22.50%

ENHANCED PERFORMANCE
80% efficiency even after 25 year of operation

WHY SENZA SOLAR



Withstanding Harsh Environment
Reliable quality leads to a better sustainability even in harsh environment like desert, farm and coastline.



Low-light Performance
Advanced glass and solar cell surface texturing allow for excellent performance in low-light environments.



High Efficiency
High module conversion efficiency (up to 22.50%), through innovative manufacturing technology.



Severe Weather Resilience
Certified to withstand: wind load (2400 Pascal) and snow load (5400 Pascal).



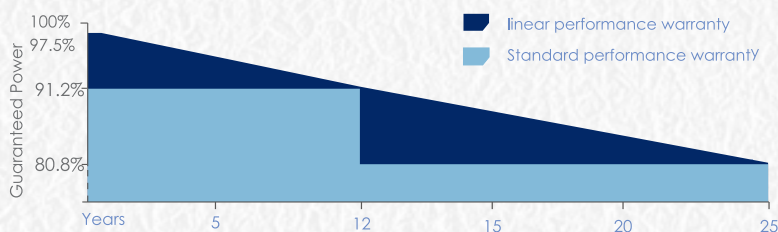
Higher Quality Assurance
100% EL test.
EL test, providing higher quality assurance



Maximized Energy Harvest
Impedance matching technology eliminates mismatch losses, more power from each module bin.

LINEAR PERFORMANCE WARRANTY

10 Year Product Warranty | 25 Year Linear Power Warranty



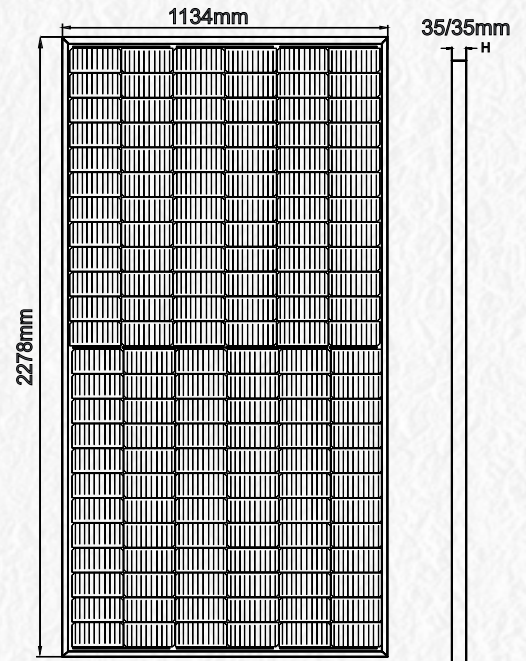
Electrical Characteristics

STC	SNS144CM550Wp-SNS144CM570Wp				
Maximum Power at STC (Pmax)	550W	555W	560W	565W	570W
Optimum Operating Voltage (Vmp)	42.05V	42.24V	42.40V	42.56V	42.72V
Optimum Operating Current (Imp)	13.08A	13.14A	13.21A	13.28A	13.34A
Open Circuit Voltage (Voc)	49.88V	50.07V	50.23V	50.39V	50.55V
Short Circuit Current (Isc)	14.11A	14.17A	14.24A	14.30A	14.36A
Module Efficiency	21.29%	21.48%	21.68%	21.87%	22.07%
Operating Module Temperature	-40 °C to +85 °C				
Maximum System Voltage	1500 V DC (IEC)				
Maximum Series Fuse Rating	30 A				
Power Tolerance	Positive				

STC: Irradiance 1000 W/m², module temperature 25 °C, AM=1.5;
Tolerance of Pmax is within +/- 3% ;

NMOT					
Maximum Power at NMOT (Pmax)	408W	411W	415W	419W	423W
Optimum Operating Voltage (Vmp)	39.74V	39.92V	40.07V	40.22V	40.37V
Optimum Operating Current (Imp)	10.27A	10.31A	10.37A	10.42A	10.47A
Open Circuit Voltage (Voc)	47.09V	47.27V	47.42V	47.57V	47.72V
Short Circuit Current (Isc)	11.08A	11.12A	11.18A	11.23A	11.27A

NMOT: Irradiance 800 W/m², ambient temperature 20 °C, AM=1.5, wind speed 1 m/s.



Temperature Characteristics

Nominal Module Operating Temperature (NMOT)	42 ± 2 °C
Temperature Coefficient of Pmax	-0.320%/°C
Temperature Coefficient of Voc	-0.260%/°C
Temperature Coefficient of Isc	0.046%/°C

Mechanical Characteristics

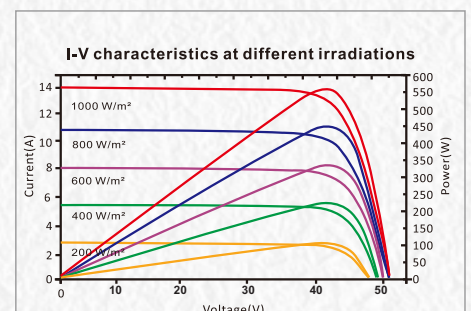
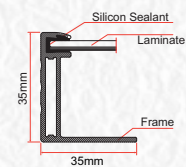
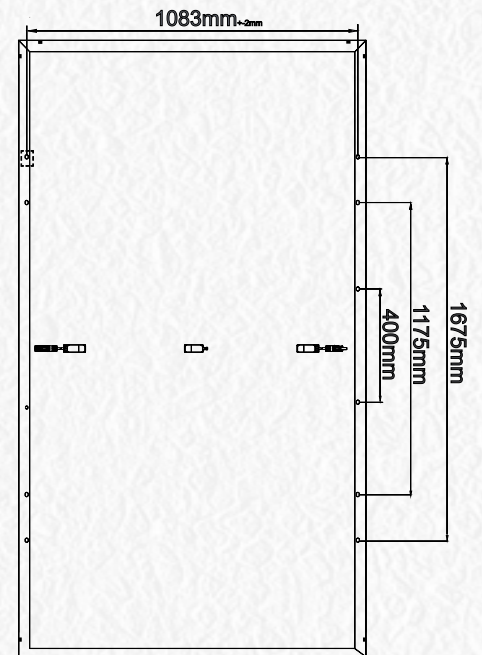
Solar Cell	91mmx182 mm
No. of Cells	144 (6 × 24)
Dimensions	2278 × 1134 × 35 mm
Weight	30.00 kgs
Front Glass	3.2 mm fully tempered glass
Frame	Anodized aluminium alloy
Junction Box	IP68 rated
Output Cables	4.0 mm ²
Connectors	Mc4

Packing Information

Modules Per Pallet	31 Modules
Total Pallet	20 Pallets
Total Modules 40 Ft HQ container	620 Modules

Note:

- The specifications in this datasheet are subject to change without any notice.
- The electrical data given here is for reference purpose only.
- Please contact our sales team for any customized solutions.
- Please read safety and installation instructions before using the product.
- Subject to Bahadurgarh Jurisdiction.



SENZA[®] SOLAR

Add.:- SUN N SAND EXIM INDIA PRIVATE LIMITED
Plot No.-106, Sector-16, HSIIDC, Bahadurgarh, Haryana 124507
Whatsapp & Toll Free : +91-8222875753 , 18001206635
Website: www.senzasolar.com
Email: info.sns@senzasolar.com , psirohiya@gmail.com