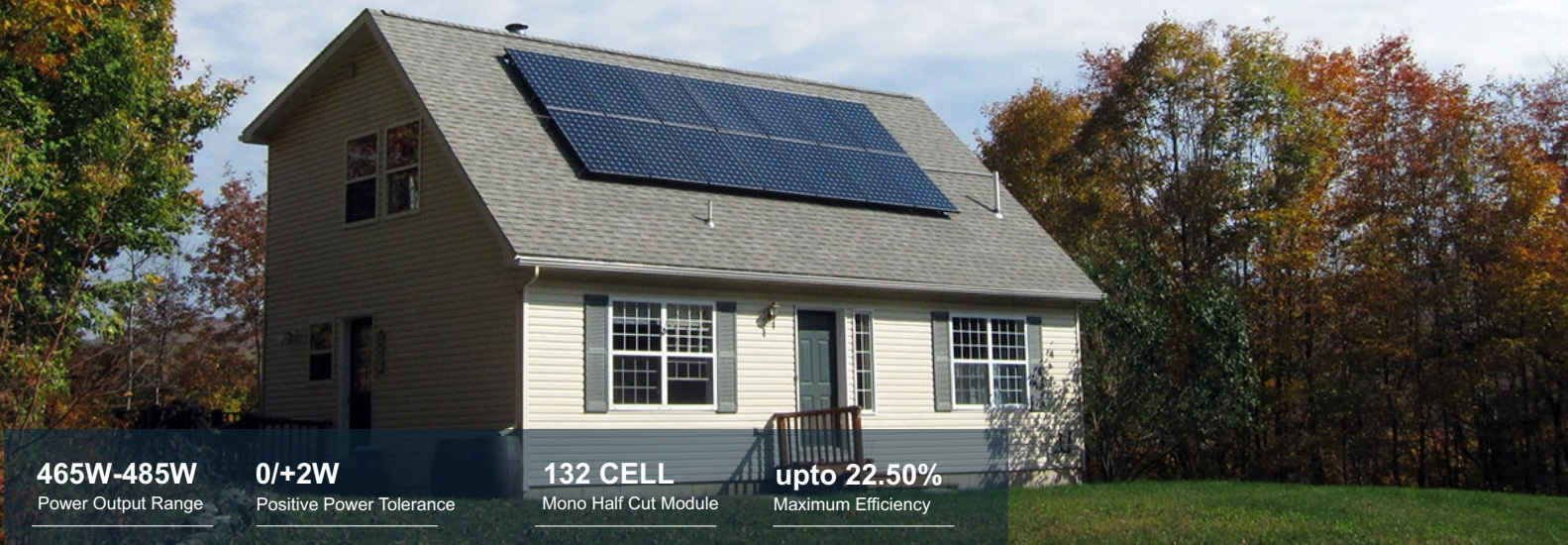


# SENZA<sup>®</sup> SOLAR

## M10 MONOFACIAL MODULE

### 465WP-485WP

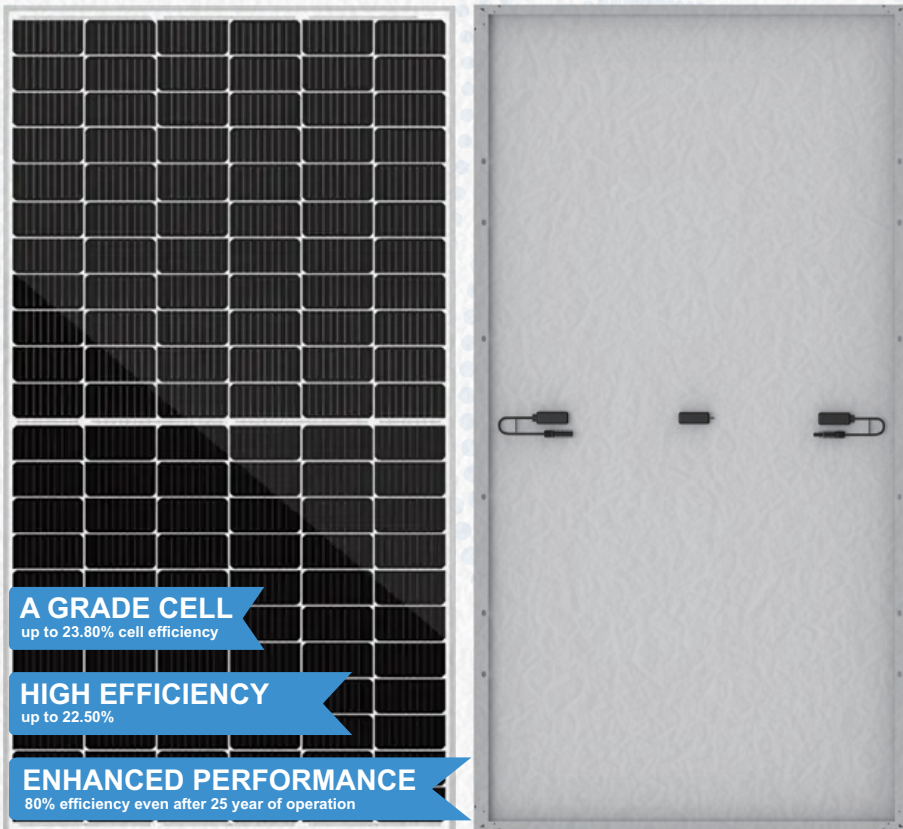


**465W-485W**  
Power Output Range

**0/+2W**  
Positive Power Tolerance

**132 CELL**  
Mono Half Cut Module

**upto 22.50%**  
Maximum Efficiency



**A GRADE CELL**  
up to 23.80% cell efficiency

**HIGH EFFICIENCY**  
up to 22.50%

**ENHANCED PERFORMANCE**  
80% efficiency even after 25 year of operation

## WHY SENZA SOLAR



**Withstanding Harsh Environment**  
Reliable quality leads to a better sustainability even in harsh environment like desert, farm and coastline.



**Low-light Performance**  
Advanced glass and solar cell surface texturing allow for excellent performance in low-light environments.



**High Efficiency**  
High module conversion efficiency (up to 22.50%), through innovative manufacturing technology.



**Severe Weather Resilience**  
Certified to withstand: wind load (2400 Pascal) and snow load (5400 Pascal).



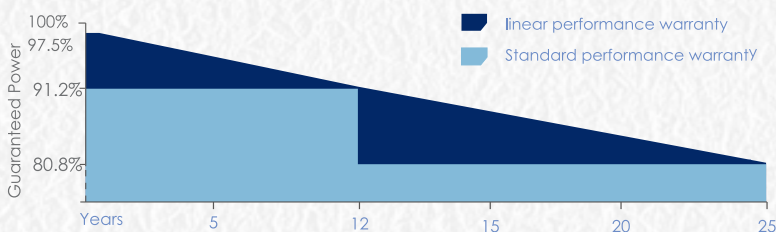
**Higher Quality Assurance**  
100% EL test.  
EL test, providing higher quality assurance



**Maximized Energy Harvest**  
Impedance matching technology eliminates mismatch losses, more power from each module bin.

## LINEAR PERFORMANCE WARRANTY

10 Year Product Warranty | 25 Year Linear Power Warranty



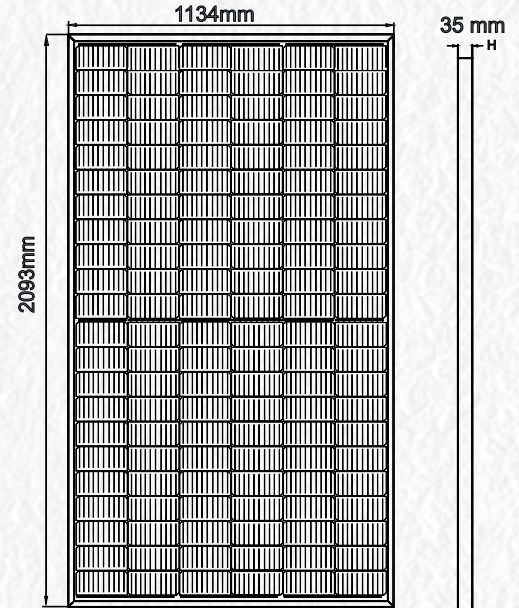
## Electrical Characteristics

STC	SNS132CM465Wp-SNS132CM485Wp				
Maximum Power at STC (Pmax)	465W	470W	475W	480W	485W
Optimum Operating Voltage (Vmp)	36.28V	36.48V	36.68V	36.88V	37.08V
Optimum Operating Current (Imp)	12.82A	12.88A	12.95A	13.02A	13.08A
Open Circuit Voltage (Voc)	43.81V	44.01V	44.21V	44.41V	44.61V
Short Circuit Current (Isc)	13.61A	13.69A	13.77A	13.85A	13.93A
Module Efficiency	19.59%	19.80%	20.01%	20.22%	20.43%
Operating Module Temperature	-40 °C to +85 °C				
Maximum System Voltage	1500 V DC (IEC)				
Maximum Series Fuse Rating	30 A				
Power Tolerance	Positive				

STC: Irradiance 1000 W/m<sup>2</sup>, module temperature 25 °C, AM=1.5;  
Tolerance of Pmax is within +/- 3% ;

NMOT					
Maximum Power at NMOT (Pmax)	345W	348W	352W	356W	359W
Optimum Operating Voltage (Vmp)	34.28V	34.47V	34.66V	34.85V	35.04V
Optimum Operating Current (Imp)	10.06A	10.11A	10.17A	10.22A	10.27A
Open Circuit Voltage (Voc)	41.36V	41.55V	41.73V	41.92V	42.11V
Short Circuit Current (Isc)	10.68A	10.75A	10.81A	10.87A	10.94A

NMOT: Irradiance 800 W/m<sup>2</sup>, ambient temperature 20 °C, AM=1.5, wind speed 1 m/s.



## Temperature Characteristics

Nominal Module Operating Temperature (NMOT)	42 ± 2 °C
Temperature Coefficient of Pmax	-0.320%/°C
Temperature Coefficient of Voc	-0.260%/°C
Temperature Coefficient of Isc	0.046%/°C

## Mechanical Characteristics

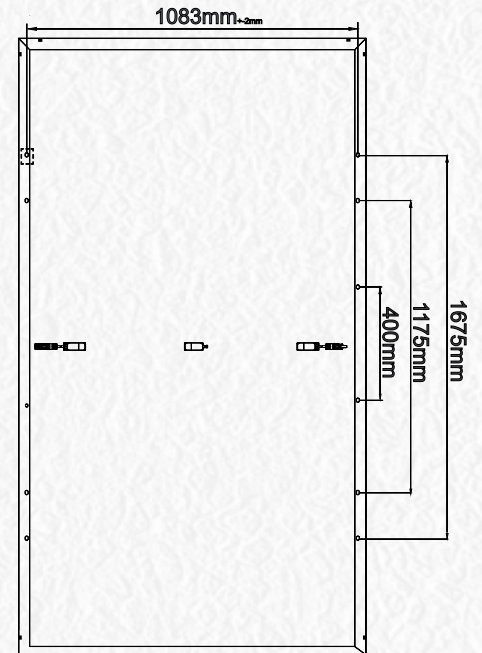
Solar Cell	91mmx182 mm
No. of Cells	132 (6 × 22)
Dimensions	2093 × 1134 × 35 mm
Weight	23.00 kgs
Front Glass	3.2 mm fully tempered glass
Frame	Anodized aluminium alloy
Junction Box	IP68 rated
Output Cables	4.0 mm <sup>2</sup>
Connectors	Mc4

## Packing Information

Modules Per Pallet	31 Modules
Total Pallet	22 Pallets
Total Modules 40 Ft HQ container	682 Modules

### Note:

- The specifications in this datasheet are subject to change without any notice.
- The electrical data given here is for reference purpose only.
- Please contact our sales team for any customized solutions.
- Please read safety and installation instructions before using the product.
- Subject to Bahadurgarh Jurisdiction.



# SENZA<sup>®</sup> SOLAR

Add.:- SUN N SAND EXIM INDIA PRIVATE LIMITED  
Plot No.-106, Sector-16, HSIIDC, Bahadurgarh, Haryana 124507  
Whatsapp & Toll Free : +91-8222875753 , 18001206635  
Website: [www.senzasolar.com](http://www.senzasolar.com)  
Email: [info.sns@senzasolar.com](mailto:info.sns@senzasolar.com) , [psirohiya@gmail.com](mailto:psirohiya@gmail.com)

