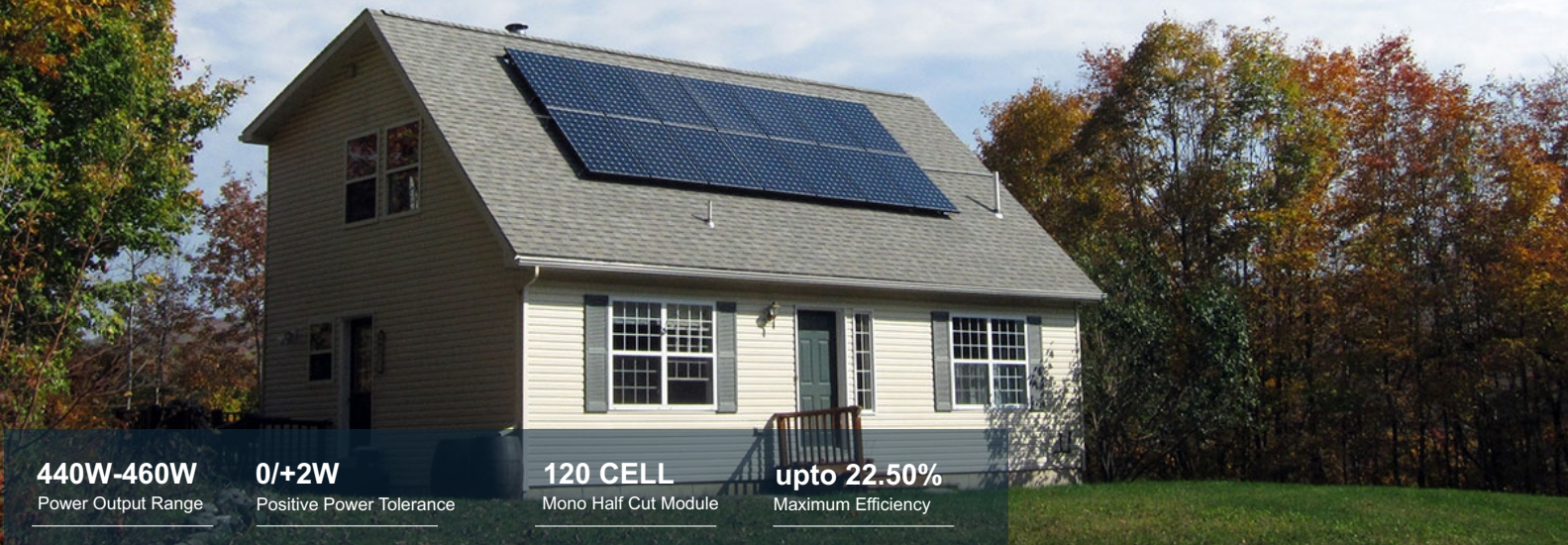


SENZA[®] SOLAR

M10 MONOFACIAL MODULE

440WP-460WP

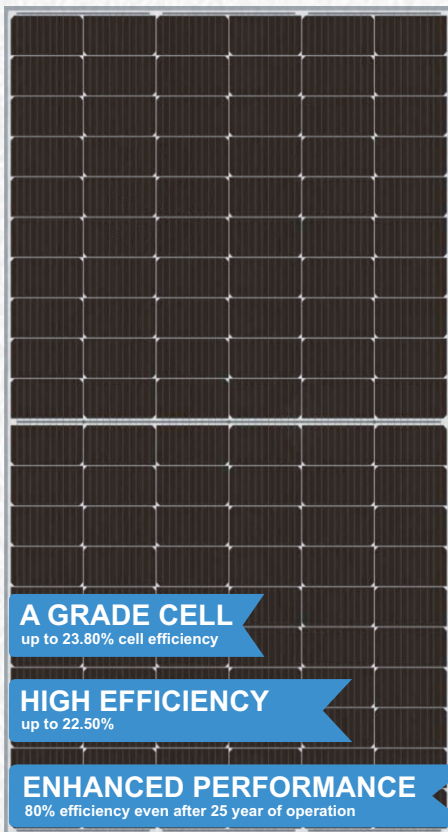


440W-460W
Power Output Range

0/+2W
Positive Power Tolerance

120 CELL
Mono Half Cut Module

upto 22.50%
Maximum Efficiency



A GRADE CELL
up to 23.80% cell efficiency

HIGH EFFICIENCY
up to 22.50%

ENHANCED PERFORMANCE
80% efficiency even after 25 year of operation



WHY SENZA SOLAR



Withstanding Harsh Environment
Reliable quality leads to a better sustainability even in harsh environment like desert, farm and coastline.



Low-light Performance
Advanced glass and solar cell surface texturing allow for excellent performance in low-light environments.



High Efficiency
High module conversion efficiency (up to 22.50%), through innovative manufacturing technology.



Severe Weather Resilience
Certified to withstand: wind load (2400 Pascal) and snow load (5400 Pascal).



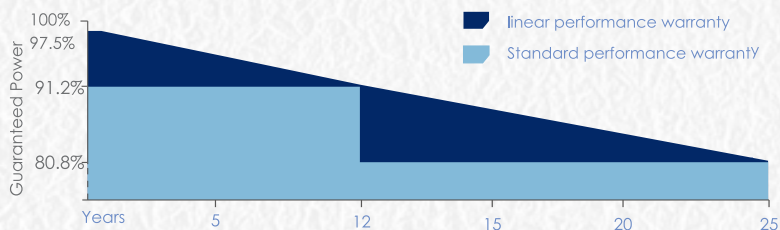
Higher Quality Assurance
100% EL test, providing higher quality assurance



Maximized Energy Harvest
Impedance matching technology eliminates mismatch losses, more power from each module bin.

LINEAR PERFORMANCE WARRANTY

10 Year Product Warranty | 25 Year Linear Power Warranty



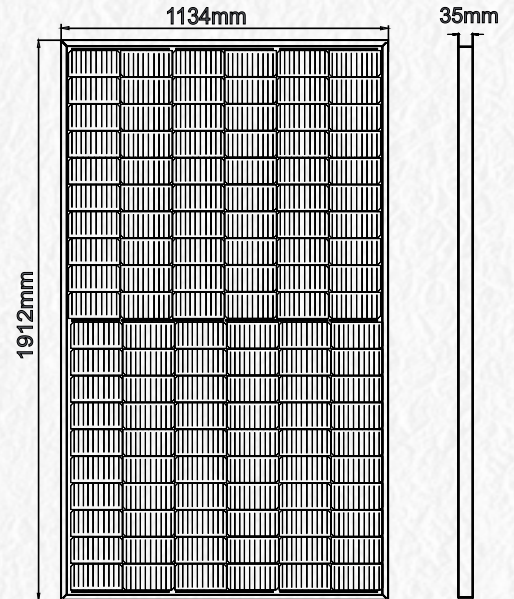
Electrical Characteristics

STC	SNS120CM440Wp-SNS132CM460Wp				
Maximum Power at STC (Pmax)	440W	445W	450W	455W	460W
Optimum Operating Voltage (Vmp)	34.45V	34.63V	34.80V	34.97V	35.16V
Optimum Operating Current (Imp)	12.78A	12.86A	12.94A	13.02A	13.09A
Open Circuit Voltage (Voc)	41.12V	41.31V	41.52V	41.72V	41.92V
Short Circuit Current (Isc)	13.48A	13.55A	13.64A	13.73A	13.80A
Module Efficiency	20.29%	20.52%	20.75%	20.99%	21.17%
Operating Module Temperature	-40 °C to +85 °C				
Maximum System Voltage	1500 V DC (IEC)				
Maximum Series Fuse Rating	30 A				
Power Tolerance	Positive				

STC: Irradiance 1000 W/m², module temperature 25 °C, AM=1.5;
Tolerance of Pmax is within +/- 3% ;

NMOT					
Maximum Power at NMOT (Pmax)	326W	330W	334W	338W	342W
Optimum Operating Voltage (Vmp)	32.56V	32.73V	32.89V	33.05V	33.23V
Optimum Operating Current (Imp)	10.03A	10.10A	10.16A	10.22A	10.28A
Open Circuit Voltage (Voc)	38.82V	39.00V	39.19V	39.38V	39.57V
Short Circuit Current (Isc)	10.58A	10.64A	10.71A	10.78A	10.83A

NMOT: Irradiance 800 W/m², ambient temperature 20 °C, AM=1.5, wind speed 1 m/s.



Temperature Characteristics

Nominal Module Operating Temperature (NMOT)	42 ± 2 °C
Temperature Coefficient of Pmax	-0.320%/°C
Temperature Coefficient of Voc	-0.260%/°C
Temperature Coefficient of Isc	0.046%/°C

Mechanical Characteristics

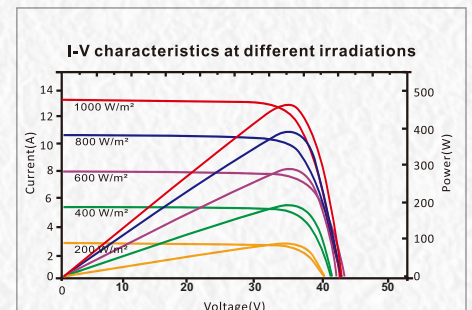
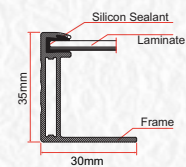
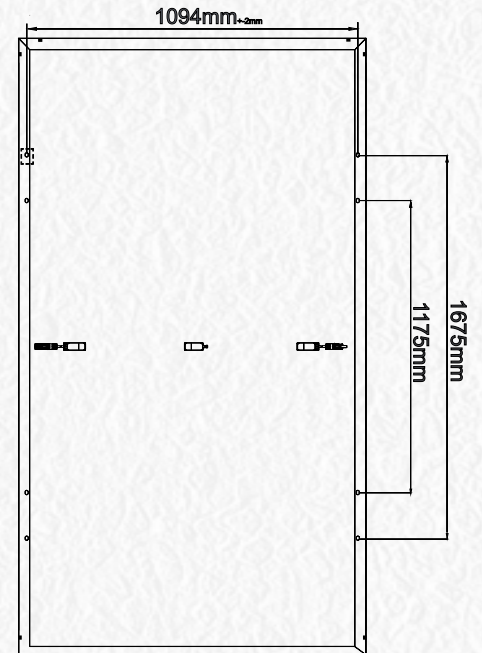
Solar Cell	91mmx182 mm
No. of Cells	120 (6 × 20)
Dimensions	1912 × 1134 × 35 mm
Weight	22.00 kgs
Front Glass	3.2 mm fully tempered glass
Frame	Anodized aluminium alloy
Junction Box	IP68 rated
Output Cables	4.0 mm ²
Connectors	Mc4

Packing Information

Modules Per Pallet	31 Modules
Total Pallet	24 Pallets
Total Modules 40 Ft HQ container	744 Modules

Note:

- The specifications in this datasheet are subject to change without any notice.
- The electrical data given here is for reference purpose only.
- Please contact our sales team for any customized solutions.
- Please read safety and installation instructions before using the product.
- Subject to Bahadurgarh Jurisdiction.



SENZA[®] SOLAR

Add.:- SUN N SAND EXIM INDIA PRIVATE LIMITED
Plot No.-106, Sector-16, HSIIDC, Bahadurgarh, Haryana 124507
Whatsapp & Toll Free : +91-8222875753 , 18001206635
Website: www.senzasolar.com
Email: info.sns@senzasolar.com , psirohiya@gmail.com