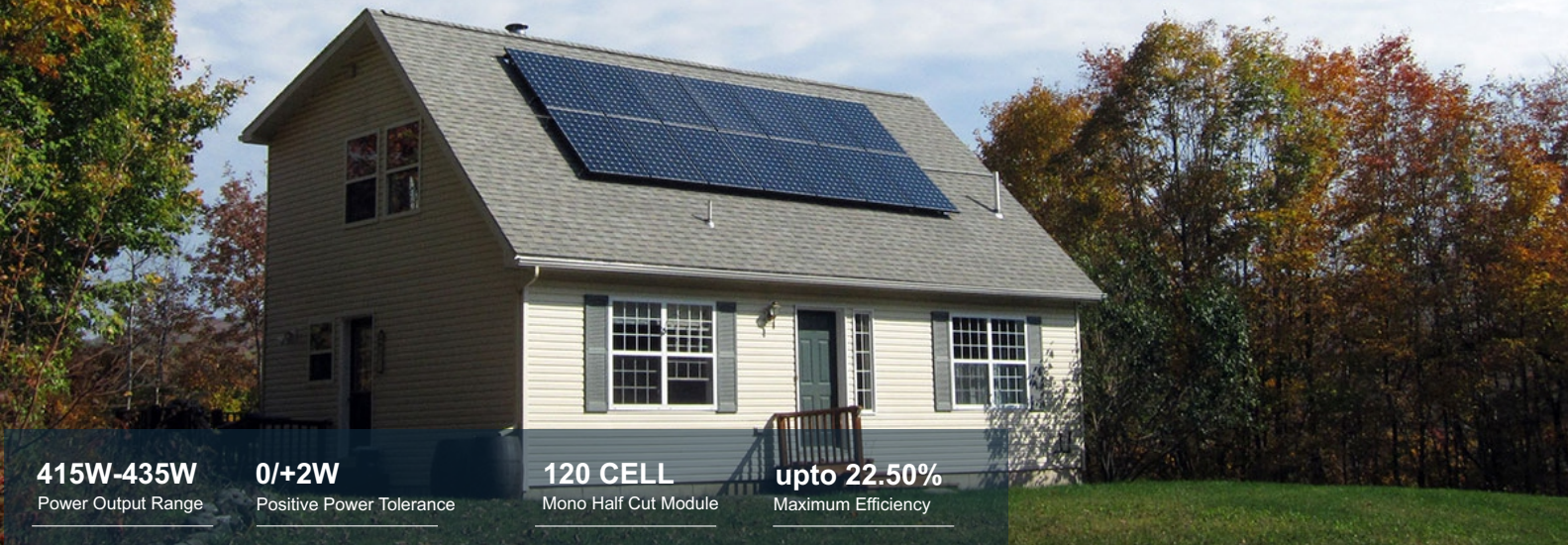


SENZA[®] SOLAR

M10 MONOFACIAL MODULE

415WP-435WP

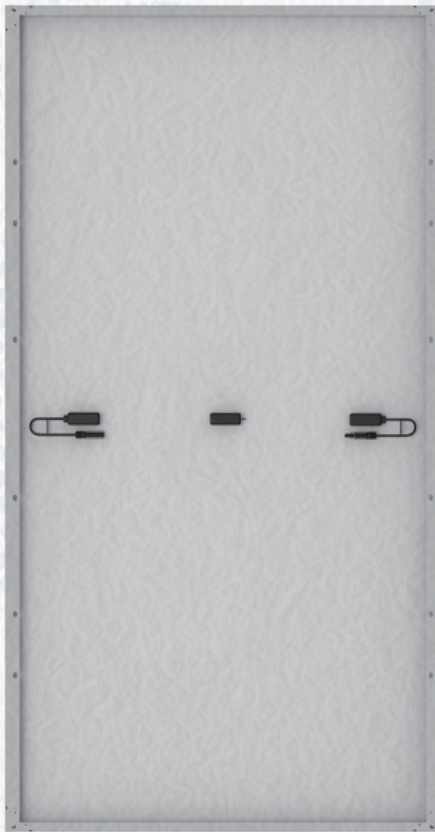
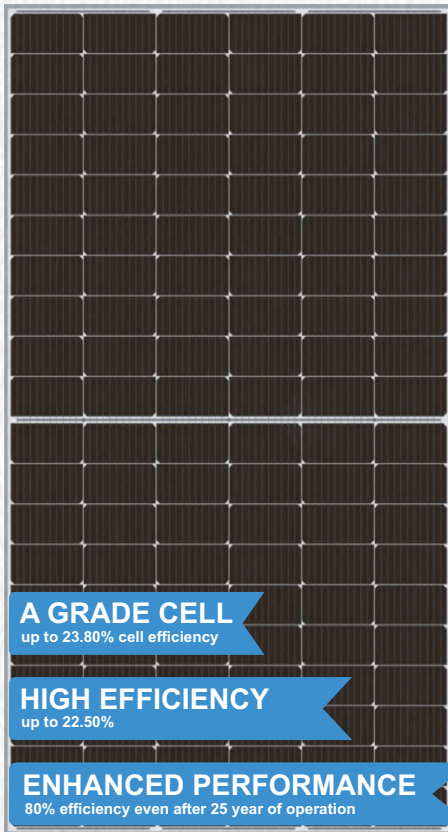


415W-435W
Power Output Range

0/+2W
Positive Power Tolerance

120 CELL
Mono Half Cut Module

upto 22.50%
Maximum Efficiency



A GRADE CELL
up to 23.80% cell efficiency

HIGH EFFICIENCY
up to 22.50%

ENHANCED PERFORMANCE
80% efficiency even after 25 year of operation

WHY SENZA SOLAR



Withstanding Harsh Environment
Reliable quality leads to a better sustainability even in harsh environment like desert, farm and coastline.



Low-light Performance
Advanced glass and solar cell surface texturing allow for excellent performance in low-light environments.



High Efficiency
High module conversion efficiency (up to 22.50%), through innovative manufacturing technology.



Severe Weather Resilience
Certified to withstand: wind load (2400 Pascal) and snow load (5400 Pascal).



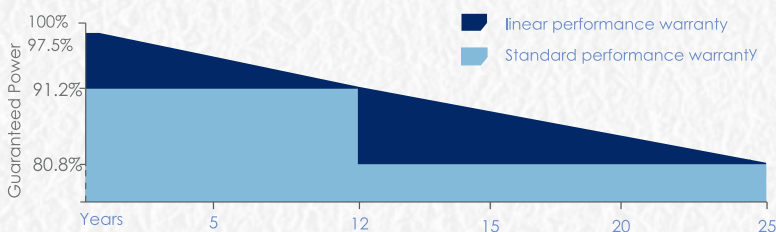
Higher Quality Assurance
100% EL test, providing higher quality assurance



Maximized Energy Harvest
Impedance matching technology eliminates mismatch losses, more power from each module bin.

LINEAR PERFORMANCE WARRANTY

10 Year Product Warranty | 25 Year Linear Power Warranty



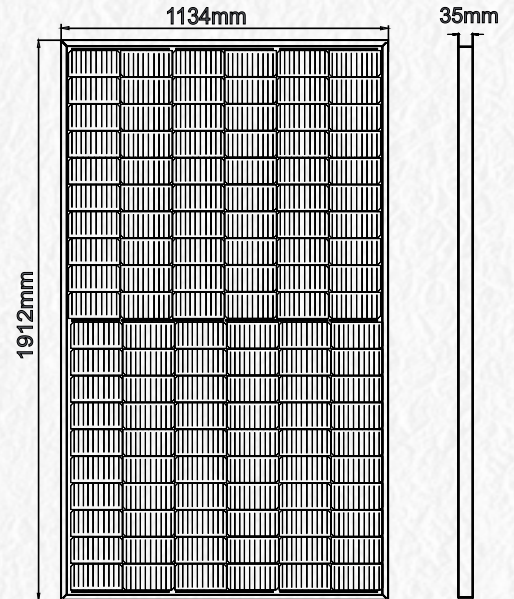
Electrical Characteristics

STC	SNS120CM415Wp-SNS132CM435Wp				
Maximum Power at STC (Pmax)	415W	420W	425W	430W	435W
Optimum Operating Voltage (Vmp)	33.55V	33.73V	33.91V	34.09V	34.27V
Optimum Operating Current (Imp)	12.38A	12.46A	12.54A	12.62A	12.70A
Open Circuit Voltage (Voc)	40.02V	40.24V	40.46V	40.68V	40.90V
Short Circuit Current (Isc)	13.27A	13.36A	13.45A	13.54A	13.63A
Module Efficiency	19.14%	19.37%	19.60%	19.83%	20.06%
Operating Module Temperature	-40 °C to +85 °C				
Maximum System Voltage	1500 V DC (IEC)				
Maximum Series Fuse Rating	30 A				
Power Tolerance	Positive				

STC: Irradiance 1000 W/m², module temperature 25 °C, AM=1.5;
Tolerance of Pmax is within +/- 3% ;

NMOT					
Maximum Power at NMOT (Pmax)	308W	312W	316W	320W	324W
Optimum Operating Voltage (Vmp)	31.70V	31.87V	32.04V	32.22V	32.39V
Optimum Operating Current (Imp)	9.72A	9.78A	9.84A	9.91A	9.97A
Open Circuit Voltage (Voc)	37.78V	37.99V	38.19V	38.40V	38.61V
Short Circuit Current (Isc)	10.42A	10.49A	10.56A	10.63A	10.70A

NMOT: Irradiance 800 W/m², ambient temperature 20 °C, AM=1.5, wind speed 1 m/s.



Temperature Characteristics

Nominal Module Operating Temperature (NMOT)	42 ± 2 °C
Temperature Coefficient of Pmax	-0.320%/°C
Temperature Coefficient of Voc	-0.260%/°C
Temperature Coefficient of Isc	0.046%/°C

Mechanical Characteristics

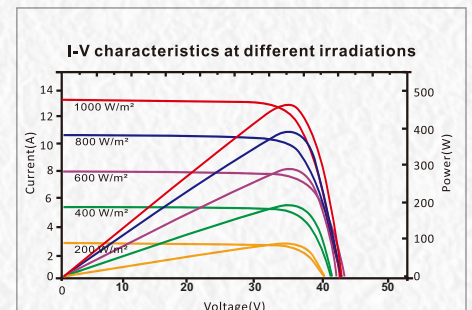
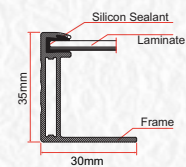
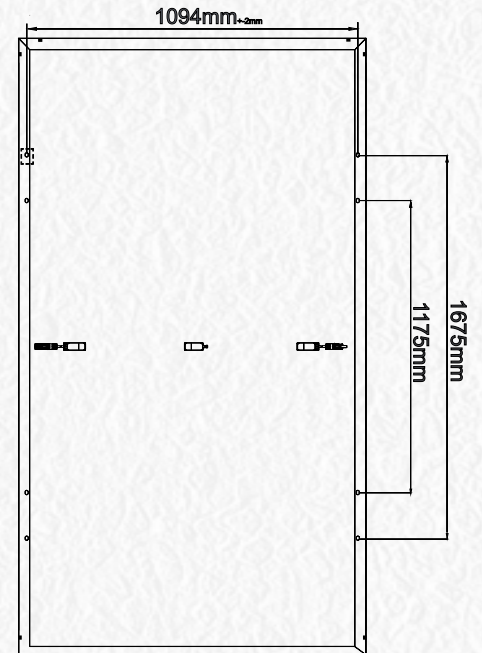
Solar Cell	91mmx182 mm
No. of Cells	120 (6 × 20)
Dimensions	1912 × 1134 × 35 mm
Weight	22.00 kgs
Front Glass	3.2 mm fully tempered glass
Frame	Anodized aluminium alloy
Junction Box	IP68 rated
Output Cables	4.0 mm ²
Connectors	Mc4

Packing Information

Modules Per Pallet	31 Modules
Total Pallet	24 Pallets
Total Modules 40 Ft HQ container	744 Modules

Note:

- The specifications in this datasheet are subject to change without any notice.
- The electrical data given here is for reference purpose only.
- Please contact our sales team for any customized solutions.
- Please read safety and installation instructions before using the product.
- Subject to Bahadurgarh Jurisdiction.



SENZA[®] SOLAR

Add.:- SUN N SAND EXIM INDIA PRIVATE LIMITED
Plot No.-106, Sector-16, HSIIDC, Bahadurgarh, Haryana 124507
Whatsapp & Toll Free : +91-8222875753 , 18001206635
Website: www.senzasolar.com
Email: info.sns@senzasolar.com , psirohiya@gmail.com