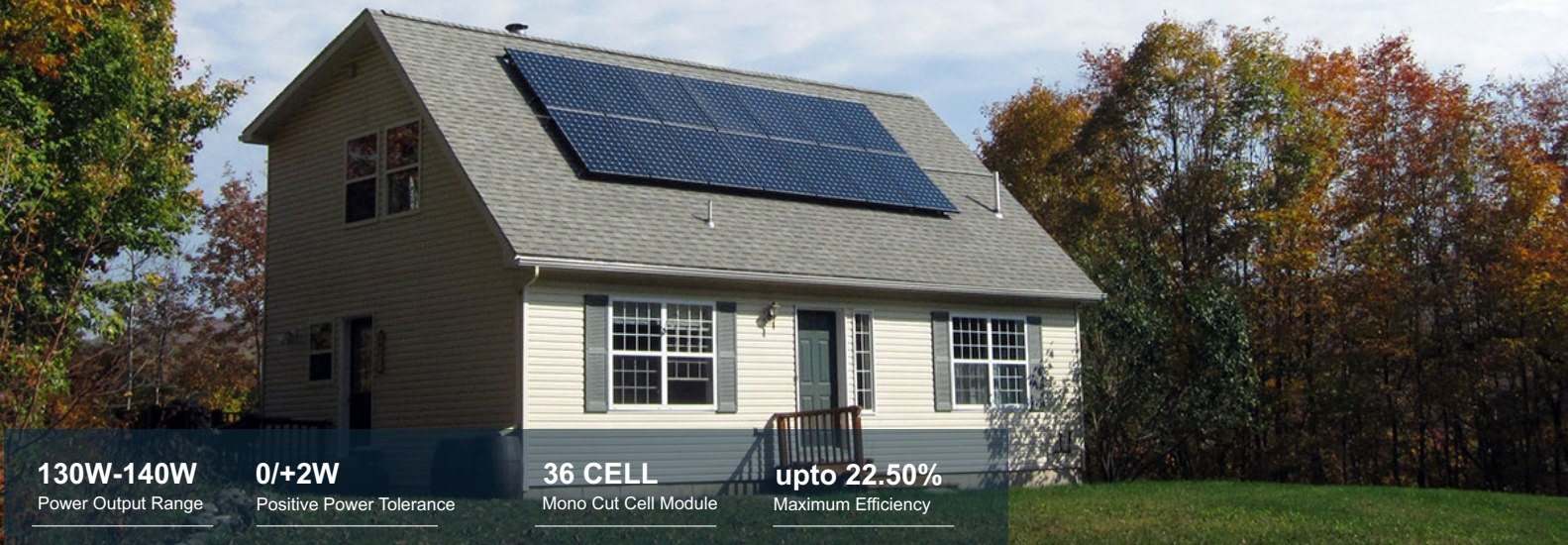


SENZA[®] SOLAR

M10 MONOFACIAL MODULE

130WP-140WP

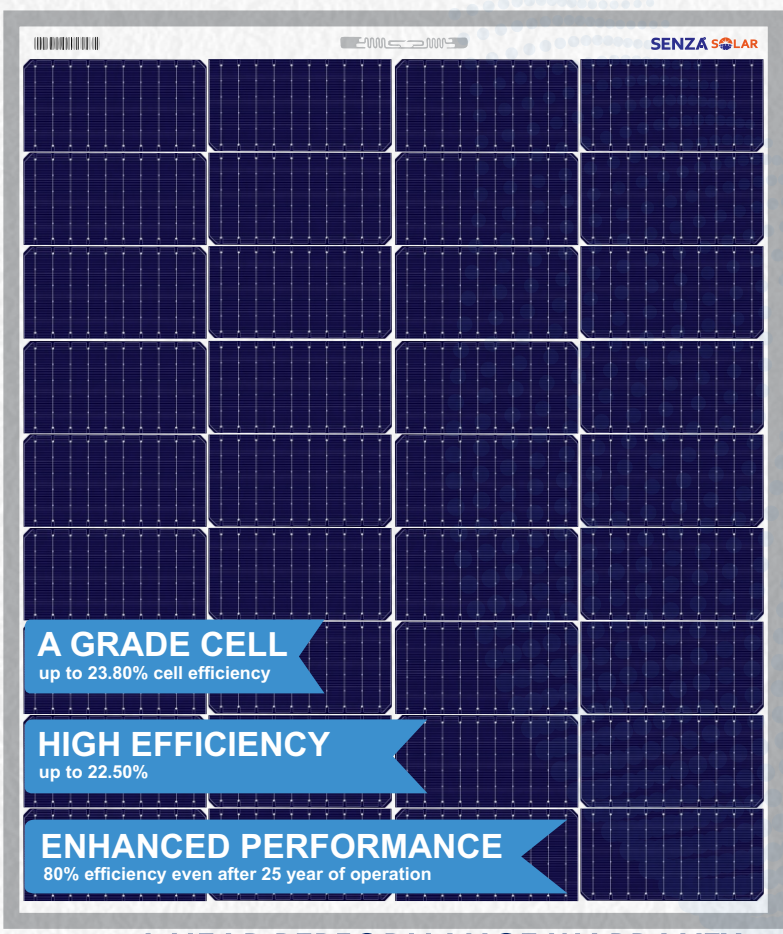


130W-140W
Power Output Range

0/+2W
Positive Power Tolerance

36 CELL
Mono Cut Cell Module

upto 22.50%
Maximum Efficiency



WHY SENZA SOLAR



Withstanding Harsh Environment
Reliable quality leads to a better sustainability even in harsh environment like desert, farm and coastline.



Low-light Performance
Advanced glass and solar cell surface texturing allow for excellent performance in low-light environments.



High Efficiency
High module conversion efficiency (up to 22.50%), through innovative manufacturing technology.



Severe Weather Resilience
Certified to withstand: wind load (2400 Pascal) and snow load (5400 Pascal).



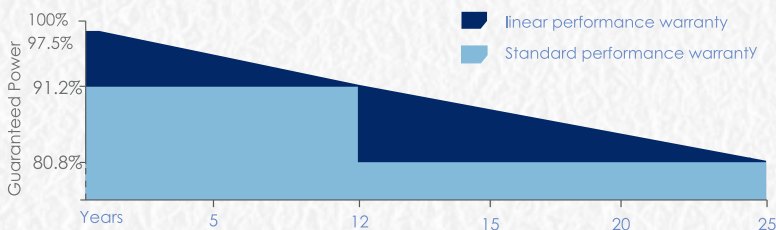
Higher Quality Assurance
100% EL test.
EL test, providing higher quality assurance



Maximized Energy Harvest
Impedance matching technology eliminates mismatch losses, more power from each module bin.

LINEAR PERFORMANCE WARRANTY

10 Year Product Warranty | 25 Year Linear Power Warranty



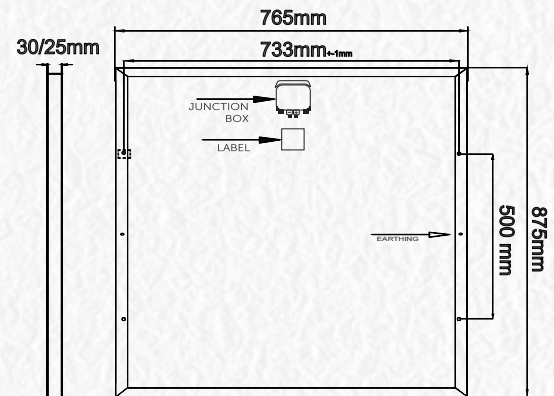
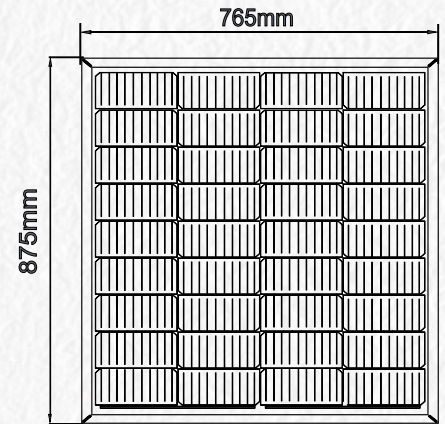
Electrical Characteristics

STC	SNS36CMP130Wp-SNS36CMP140Wp		
Maximum Power at STC (Pmax)	130W	135W	140W
Optimum Operating Voltage (Vmp)	6.31V	6.43V	6.55V
Optimum Operating Current (Imp)	12.82A	12.98A	13.14A
Open Circuit Voltage (Voc)	24.47V	24.69V	24.91V
Short Circuit Current (Isc)	6.65A	6.80A	6.95A
Module Efficiency	19.42%	20.16%	20.91%
Operating Module Temperature	-40 °C to +85 °C		
Maximum System Voltage	600 V DC (IEC)		
Maximum Series Fuse Rating	12 A		
Power Tolerance	Positive		

STC: Irradiance 1000 W/m², module temperature 25 °C, AM=1.5;
Tolerance of Pmax is within +/- 3% ;

NMOT			
Maximum Power at NMOT (Pmax)	97W	101W	104W
Optimum Operating Voltage (Vmp)	19.73V	19.97V	20.20V
Optimum Operating Current (Imp)	4.95A	5.05A	5.15A
Open Circuit Voltage (Voc)	23.10V	23.31V	23.52V
Short Circuit Current (Isc)	5.22A	5.34A	5.46A

NMOT: Irradiance 800 W/m² ambient temperature 20 °C, AM=1.5, wind speed 1 m/s.



Temperature Characteristics

Nominal Module Operating Temperature (NMOT)	42 ± 2 °C
Temperature Coefficient of Pmax	-0.320%/°C
Temperature Coefficient of Voc	-0.260%/°C
Temperature Coefficient of Isc	0.046%/°C

Mechanical Characteristics

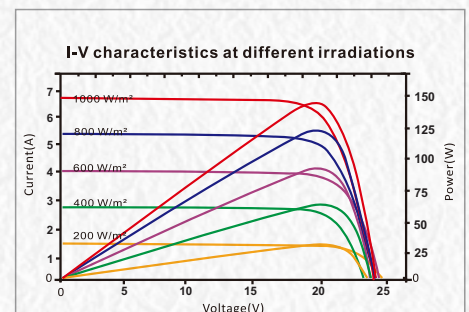
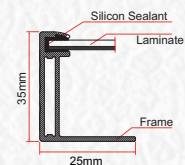
Solar Cell	91mmx182 mm
No. of Cells	36 (4 × 9)
Dimensions	875 × 765 × 35 mm
Weight	7.0 kgs
Front Glass	3.2 mm fully tempered glass
Frame	Anodized aluminium alloy
Junction Box	IP68 rated
Output Cables	N/A
Connectors	Mc4

Packing Information

Modules Per Pallet	31 Modules
Total Pallet	78 Pallets
Total Modules 40 Ft HQ container	2418 Modules

Note:

- The specifications in this datasheet are subject to change without any notice.
- The electrical data given here is for reference purpose only.
- Please contact our sales team for any customized solutions.
- Please read safety and installation instructions before using the product.
- Subject to Bahadurgarh Jurisdiction.



SENZA[®] SOLAR

Add.:- SUN N SAND EXIM INDIA PRIVATE LIMITED
Plot No.-106, Sector-16, HSIIDC, Bahadurgarh, Haryana 124507
Whatsapp & Toll Free : +91-8222875753 , 18001206635
Website: www.senzasolar.com
Email: info.sns@senzasolar.com , psirohiya@gmail.com