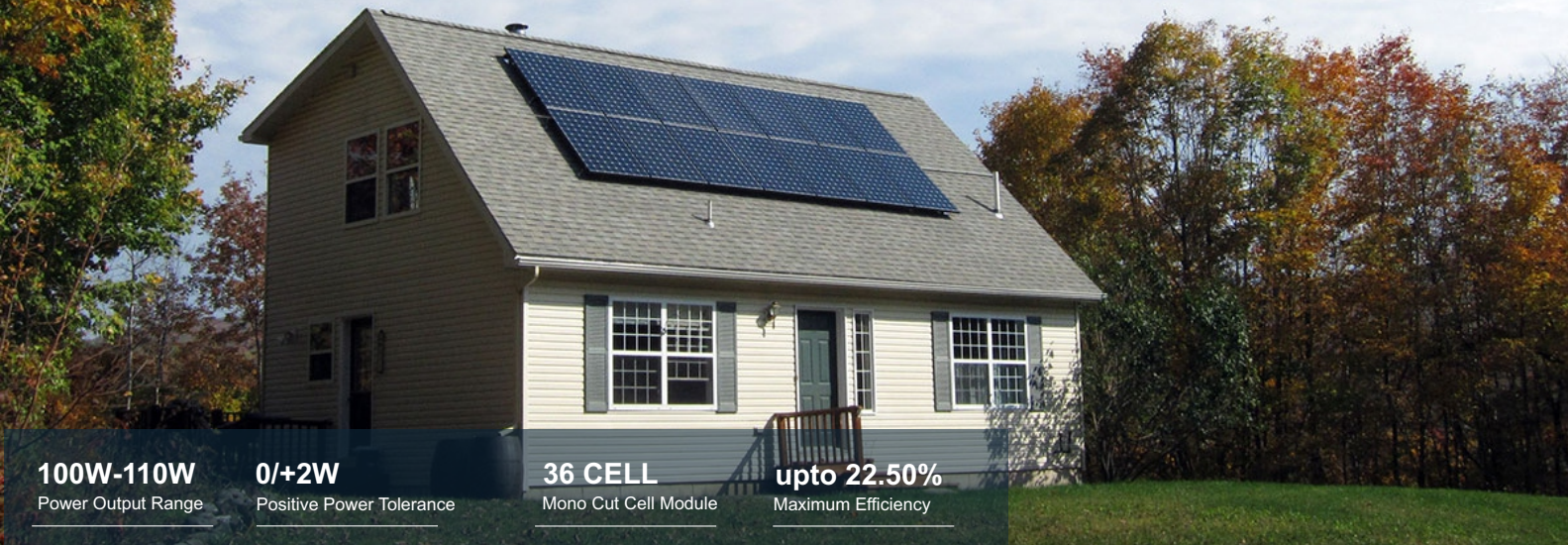


SENZA[®] SOLAR

M10 MONOFACIAL MODULE

100WP-110WP

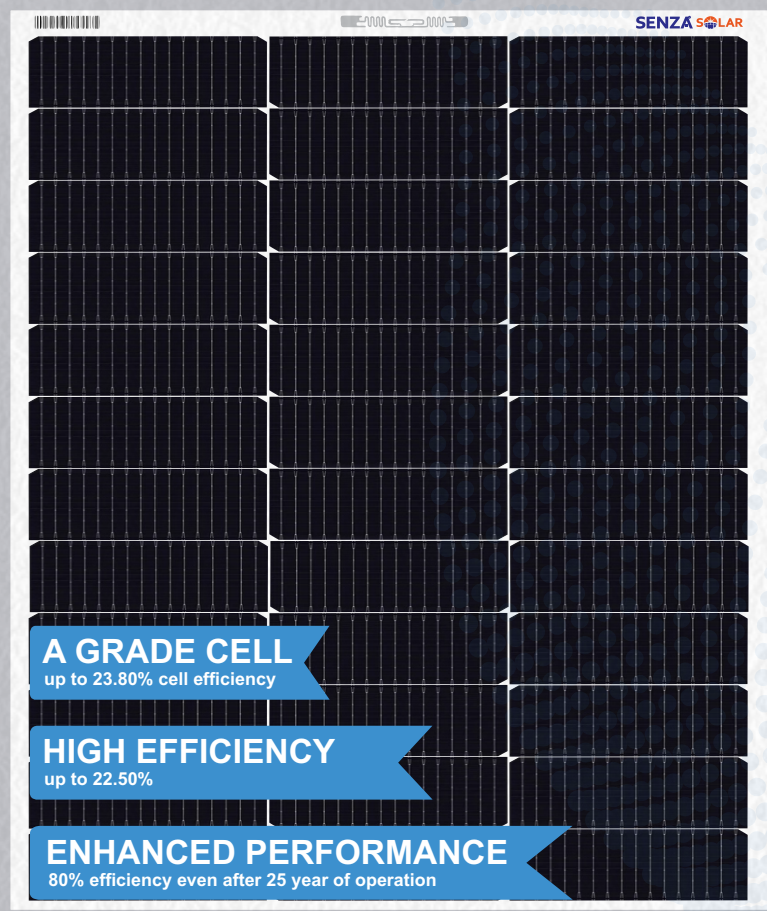


100W-110W
Power Output Range

0/+2W
Positive Power Tolerance

36 CELL
Mono Cut Cell Module

upto 22.50%
Maximum Efficiency



A GRADE CELL
up to 23.80% cell efficiency

HIGH EFFICIENCY
up to 22.50%

ENHANCED PERFORMANCE
80% efficiency even after 25 year of operation

WHY SENZA SOLAR

- 

Withstanding Harsh Environment
Reliable quality leads to a better sustainability even in harsh environment like desert, farm and coastline.
- 

Low-light Performance
Advanced glass and solar cell surface texturing allow for excellent performance in low-light environments.
- 

High Efficiency
High module conversion efficiency (up to 22.50%), through innovative manufacturing technology.
- 

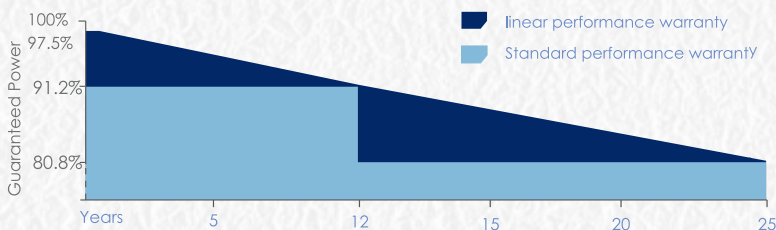
Severe Weather Resilience
Certified to withstand: wind load (2400 Pascal) and snow load (5400 Pascal).
- 

Higher Quality Assurance
100% EL test.
EL test, providing higher quality assurance
- 

Maximized Energy Harvest
Impedance matching technology eliminates mismatch losses, more power from each module bin.

LINEAR PERFORMANCE WARRANTY

10 Year Product Warranty | 25 Year Linear Power Warranty



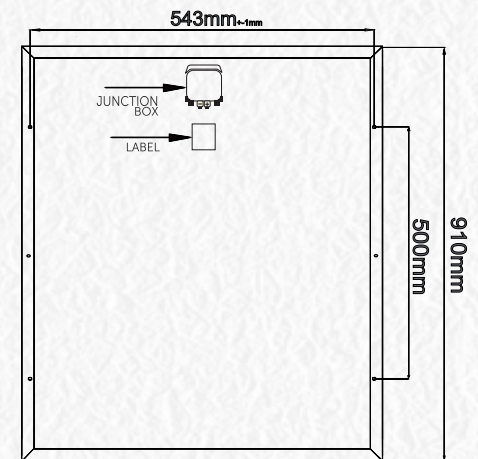
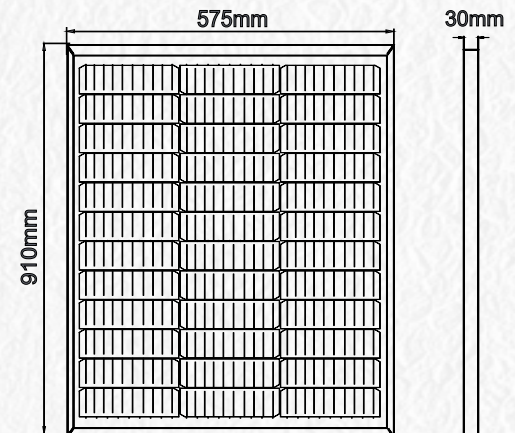
Electrical Characteristics

STC	SNS36CMP100Wp-SNS36CMP110Wp		
Maximum Power at STC (Pmax)	100W	105W	110W
Optimum Operating Voltage (Vmp)	20.80V	21.13V	21.42V
Optimum Operating Current (Imp)	4.91A	5.02A	5.13A
Open Circuit Voltage (Voc)	24.70V	24.69V	24.98V
Short Circuit Current (Isc)	5.26A	5.30A	5.47A
Module Efficiency	19.11%	20.06%	21.02%
Operating Module Temperature	-40 °C to +85 °C		
Maximum System Voltage	600 V DC (IEC)		
Maximum Series Fuse Rating	12 A		
Power Tolerance	Positive		

STC: Irradiance 1000 W/m², module temperature 25 °C, AM=1.5;
Tolerance of Pmax is within +/- 3% ;

NMOT			
Maximum Power at NMOT (Pmax)	75W	79W	82W
Optimum Operating Voltage (Vmp)	19.66V	19.97V	20.24V
Optimum Operating Current (Imp)	3.85A	3.94A	4.03A
Open Circuit Voltage (Voc)	23.32V	23.31V	23.58V
Short Circuit Current (Isc)	4.03A	4.16A	5.29A

NMOT: Irradiance 800 W/m², ambient temperature 20 °C, AM=1.5, wind speed 1 m/s.

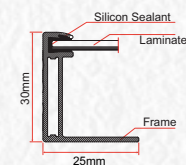


Temperature Characteristics

Nominal Module Operating Temperature (NMOT)	42 ± 2 °C
Temperature Coefficient of Pmax	-0.320%/°C
Temperature Coefficient of Voc	-0.260%/°C
Temperature Coefficient of Isc	0.046%/°C

Mechanical Characteristics

Solar Cell	71mmx182 mm
No. of Cells	36 (4 × 9)
Dimensions	910 × 575 × 30 mm
Weight	5.5 kgs
Front Glass	3.2 mm fully tempered glass
Frame	Anodized aluminium alloy
Junction Box	IP68 rated
Output Cables	N/A
Connectors	N/A

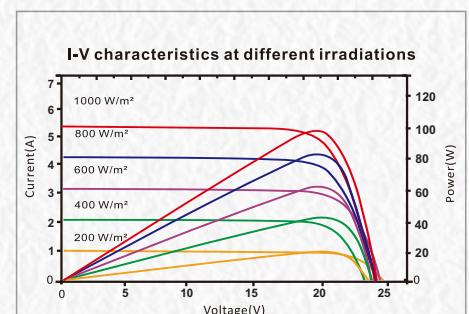


Packing Information

Modules Per Pallet	-----
Total Pallet	-----
Total Modules 40 Ft HQ container	2712Modules

Note:

- The specifications in this datasheet are subject to change without any notice.
- The electrical data given here is for reference purpose only.
- Please contact our sales team for any customized solutions.
- Please read safety and installation instructions before using the product.
- Subject to Bahadurgarh Jurisdiction.



SENZA[®] SOLAR

Add.:- SUN N SAND EXIM INDIA PRIVATE LIMITED
Plot No.-106, Sector-16, HSIIDC, Bahadurgarh, Haryana 124507
Whatsapp & Toll Free : +91-8222875753 , 18001206635
Website: www.senzasolar.com
Email: info.sns@senzasolar.com , psirohiya@gmail.com