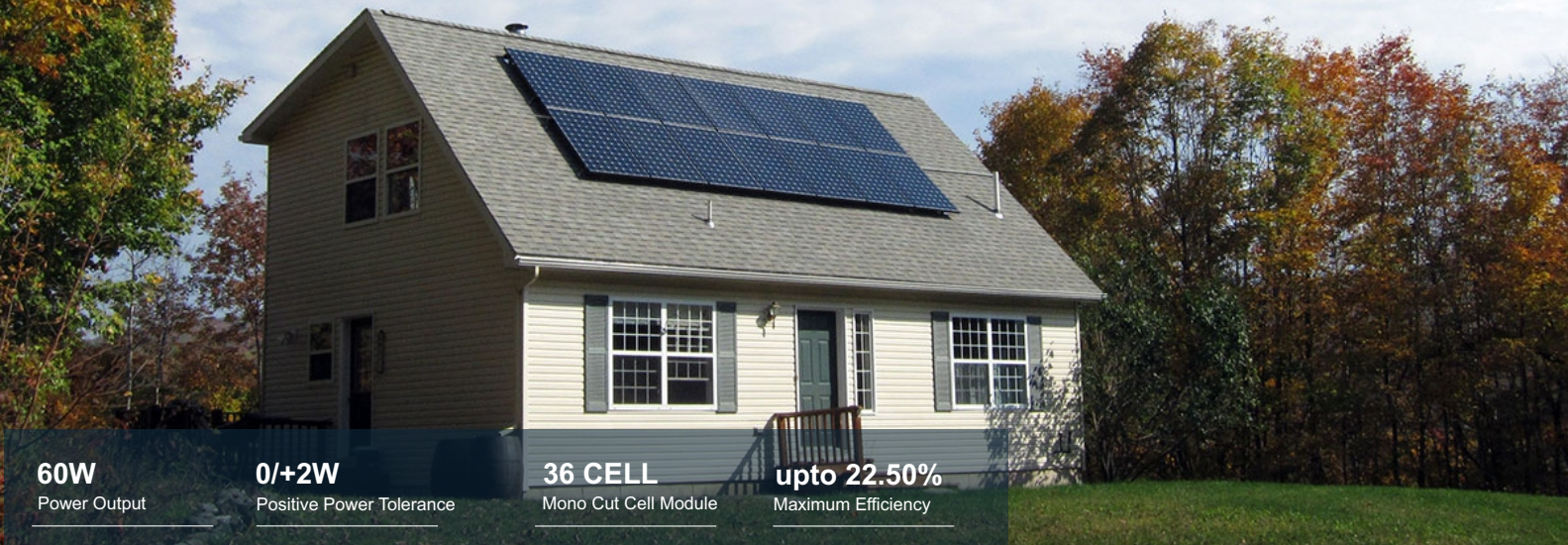


# SENZA<sup>®</sup> SOLAR

## M10 MONOFACIAL MODULE

### 60WP



**60W**  
Power Output

**0/+2W**  
Positive Power Tolerance

**36 CELL**  
Mono Cut Cell Module

**upto 22.50%**  
Maximum Efficiency

## WHY SENZA SOLAR



**Withstanding Harsh Environment**  
Reliable quality leads to a better sustainability even in harsh environment like desert, farm and coastline.



**Low-light Performance**  
Advanced glass and solar cell surface texturing allow for excellent performance in low-light environments.



**High Efficiency**  
High module conversion efficiency (up to 22.50%), through innovative manufacturing technology.



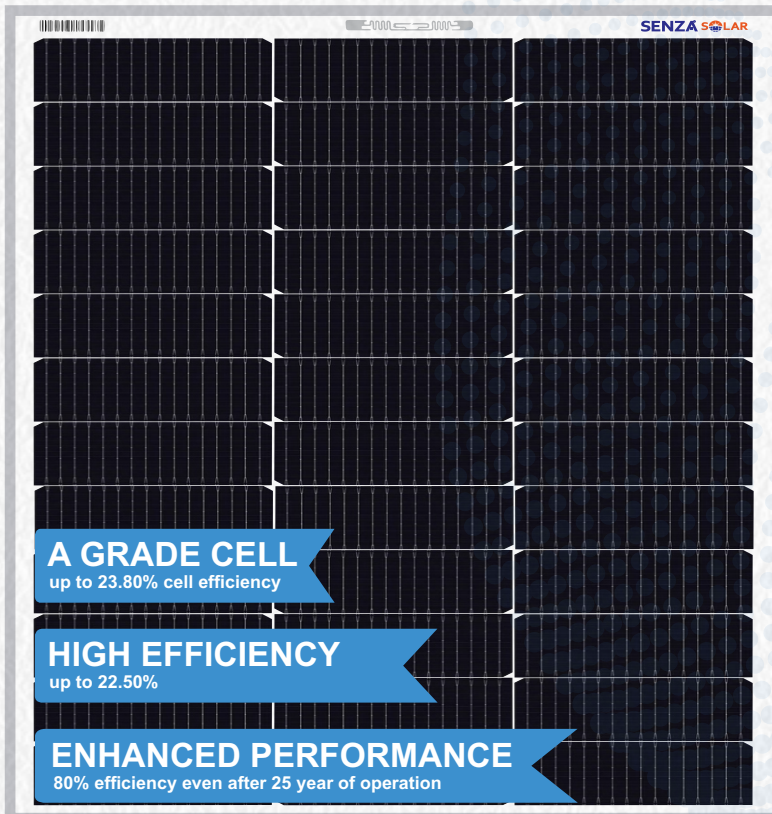
**Severe Weather Resilience**  
Certified to withstand: wind load (2400 Pascal) and snow load (5400 Pascal).



**Higher Quality Assurance**  
100% EL test.  
EL test, providing higher quality assurance

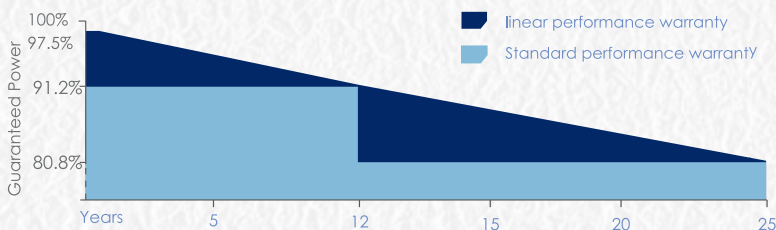


**Maximized Energy Harvest**  
Impedance matching technology eliminates mismatch losses, more power from each module bin.



## LINEAR PERFORMANCE WARRANTY

10 Year Product Warranty | 25 Year Linear Power Warranty





## Electrical Characteristics

STC	SNS36CMP060Wp
Maximum Power at STC (Pmax)	60W
Optimum Operating Voltage (Vmp)	21.34V
Optimum Operating Current (Imp)	2.87A
Open Circuit Voltage (Voc)	24.91V
Short Circuit Current (Isc)	3.02A
Module Efficiency	19.68%
Operating Module Temperature	-40 °C to +85 °C
Maximum System Voltage	600 V DC (IEC)
Maximum Series Fuse Rating	15 A
Power Tolerance	Positive

STC: Irradiance 1000 W/m<sup>2</sup>, module temperature 25 °C, AM=1.5;  
Tolerance of Pmax is within +/- 3% ;

NMOT	
Maximum Power at NMOT (Pmax)	45W
Optimum Operating Voltage (Vmp)	20.17V
Optimum Operating Current (Imp)	2.25A
Open Circuit Voltage (Voc)	23.52V
Short Circuit Current (Isc)	2.37A

NMOT: Irradiance 800 W/m<sup>2</sup>, ambient temperature 20 °C, AM=1.5, wind speed 1 m/s.

## Temperature Characteristics

Nominal Module Operating Temperature (NMOT)	42 ± 2 °C
Temperature Coefficient of Pmax	-0.320%/°C
Temperature Coefficient of Voc	-0.260%/°C
Temperature Coefficient of Isc	0.046%/°C

## Mechanical Characteristics

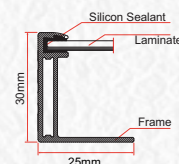
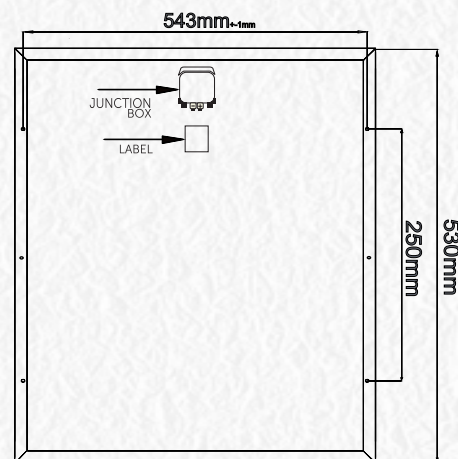
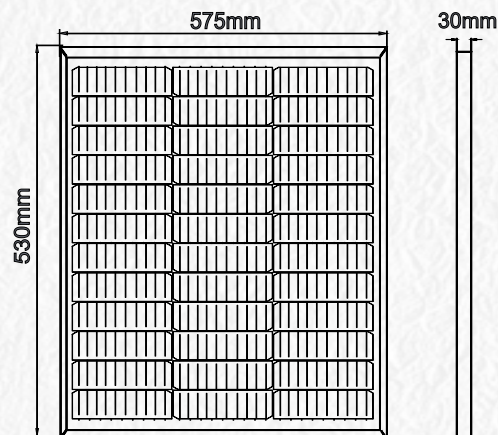
Solar Cell	40mmx182 mm
No. of Cells	36 (3 × 12)
Dimensions	530 × 575 × 30 mm
Weight	3.20 kgs
Front Glass	3.2 mm fully tempered glass
Frame	Anodized aluminium alloy
Junction Box	Ip65 rated
Output Cables	N/A
Connectors	N/A

## Packing Information

Modules Per Pallet	
Total Pallet	
Total Modules 40 Ft HQ container	5600 Modules

### Note:

- The specifications in this datasheet are subject to change without any notice.
- The electrical data given here is for reference purpose only.
- Please contact our sales team for any customized solutions.
- Please read safety and installation instructions before using the product.
- Subject to Bahadurgarh Jurisdiction.



# SENZA<sup>®</sup> SOLAR

Add.:- SUN N SAND EXIM INDIA PRIVATE LIMITED  
Plot No.-106, Sector-16, HSIIDC, Bahadurgarh, Haryana 124507  
Whatsapp & Toll Free : +91-8222875753 , 18001206635  
Website: [www.senzasolar.com](http://www.senzasolar.com)  
Email: [info.sns@senzasolar.com](mailto:info.sns@senzasolar.com) , [psirohiya@gmail.com](mailto:psirohiya@gmail.com)