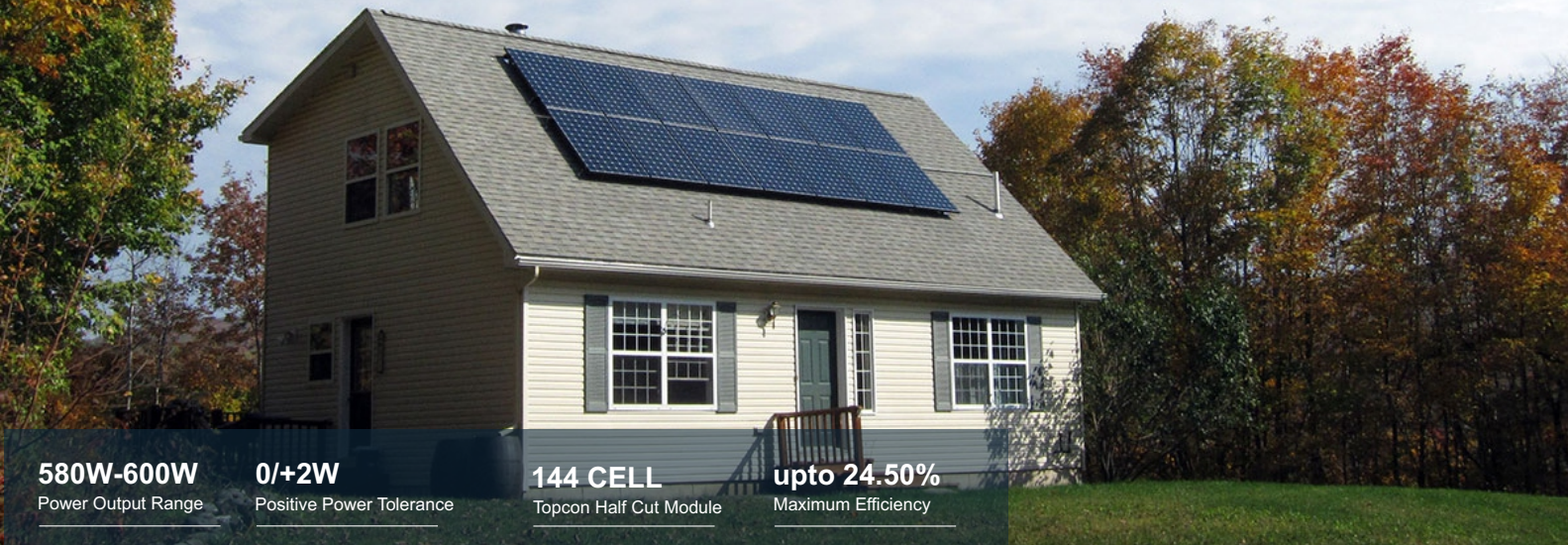


SENZA[®] SOLAR

TOPCON BIFACIAL MODULE

580WP-600WP G2G

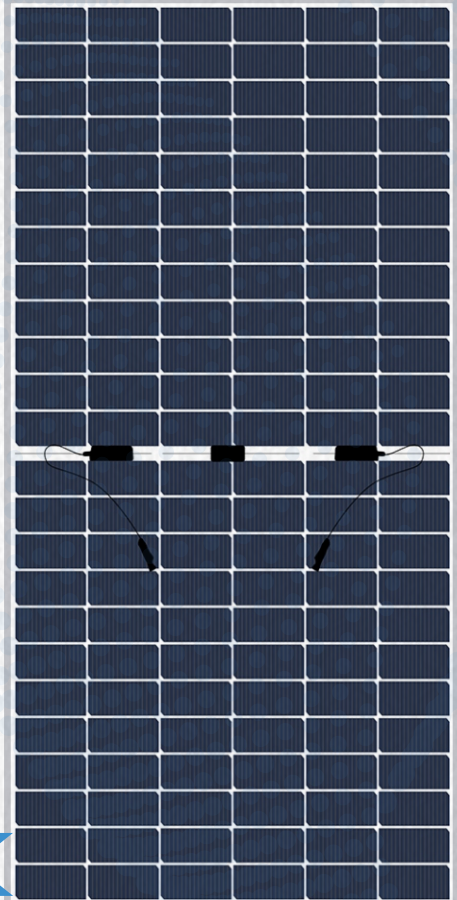
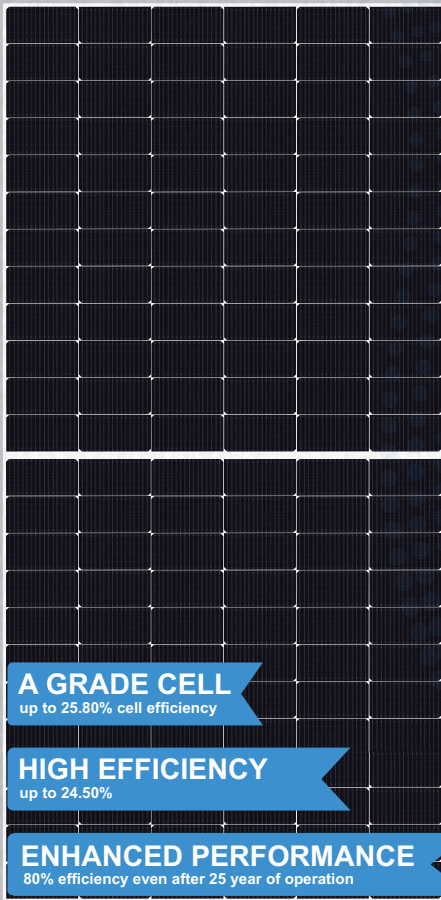


580W-600W
Power Output Range

0/+2W
Positive Power Tolerance

144 CELL
Topcon Half Cut Module

upto 24.50%
Maximum Efficiency



A GRADE CELL
up to 25.80% cell efficiency

HIGH EFFICIENCY
up to 24.50%

ENHANCED PERFORMANCE
80% efficiency even after 25 year of operation

WHY SENZA SOLAR



Withstanding Harsh Environment
Reliable quality leads to a better sustainability even in harsh environment like desert, farm and coastline.



Low-light Performance
Advanced glass and solar cell surface texturing allow for excellent performance in low-light environments.



High Efficiency
High module conversion efficiency (up to 24.50%), through innovative manufacturing technology.



Severe Weather Resilience
Certified to withstand: wind load (2400 Pascal) and snow load (5400 Pascal).



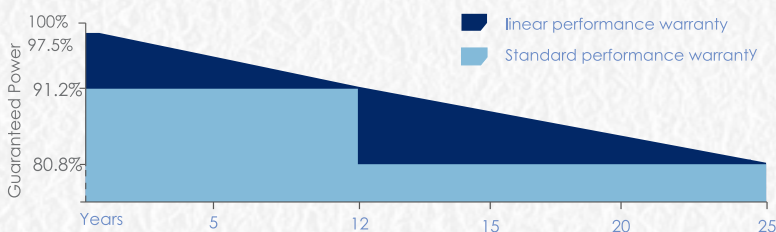
Higher Quality Assurance
100% EL test.
EL test, providing higher quality assurance



Maximized Energy Harvest
Impedance matching technology eliminates mismatch losses, more power from each module bin.

LINEAR PERFORMANCE WARRANTY

10 Year Product Warranty | 25 Year Linear Power Warranty



Electrical Characteristics

STC	SNS144CMT580Wp-SNS144CMT600Wp				
Maximum Power at STC (Pmax)	580W	585W	590W	595W	600W
Optimum Operating Voltage (Vmp)	43.78V	43.92V	43.99V	44.14V	44.28V
Optimum Operating Current (Imp)	13.30A	13.37A	13.44A	13.51A	13.57A
Open Circuit Voltage (Voc)	51.05V	51.19V	51.26V	51.41V	51.55V
Short Circuit Current (Isc)	13.86A	13.93A	14.00A	14.07A	14.14A
Module Efficiency	22.45%	22.64%	22.83%	23.03%	23.22%
Operating Module Temperature	-40 °C to +85 °C				
Maximum System Voltage	1500 V DC (IEC)				
Maximum Series Fuse Rating	30 A				
Power Tolerance	Positive				

STC: Irradiance 1000 W/m², module temperature 25 °C, AM=1.5;
Tolerance of Pmax is within +/- 3% ;

NMOT					
Maximum Power at NMOT (Pmax)	432W	436W	440W	444W	448W
Optimum Operating Voltage (Vmp)	41.37V	41.50V	41.63V	41.76V	41.89V
Optimum Operating Current (Imp)	10.44A	10.49A	10.54A	10.59A	10.64A
Open Circuit Voltage (Voc)	48.19V	48.32V	48.45V	48.58V	48.71V
Short Circuit Current (Isc)	10.86A	10.92A	10.98A	11.04A	11.10A

NMOT: Irradiance 800 W/m², ambient temperature 20 °C, AM=1.5, wind speed 1 m/s.

MODEL	580W	585W	590W	595W	600W
10% BIFACIAL GAIN	638.0W	643.5W	649.0W	654.5W	660.0W
20% BIFACIAL GAIN	696.0W	702.0W	708.0W	714.0W	720.0W
30% BIFACIAL GAIN	754.0W	760.5W	767.0W	773.5W	780.0W

Temperature Characteristics

Nominal Module Operating Temperature (NMOT)	42 ± 2 °C
Temperature Coefficient of Pmax	-0.320%/°C
Temperature Coefficient of Voc	-0.260%/°C
Temperature Coefficient of Isc	0.046%/°C

Mechanical Characteristics

Solar Cell	91mmx182 mm
No. of Cells	144 (6 × 24)
Dimensions	2278 × 1134 × 35 mm
Weight	32.00 kgs
Front & Back Glass	2+2 mm fully tempered glass
Frame	Anodized aluminium alloy
Junction Box	IP68 rated
Output Cables	4.0 mm ²
Connectors	Mc4

Packing Information

Modules Per Pallet	30 Modules
Total Pallet	
Total Modules 40 Ft HQ container	

Note:
 • The specifications in this datasheet are subject to change without any notice.
 • The electrical data given here is for reference purpose only.
 • Please contact our sales team for any customized solutions.
 • Please read safety and installation instructions before using the product.
 • Subject to Bahadurgarh Jurisdiction.

SENZA[®] SOLAR

SOLARMINT ENERGIES PRIVATE LIMITED
 FORMERLY : SUN N SAND EXIM (INDIA) PVT LTD
 Plot No.-106, Sector-16, HSIIDC, Bahadurgarh, Haryana 124507
 Whatsapp & Toll Free : +91-8222875753 , 18001206635
 Website: www.senzasolar.com
 Email: info.sns@senzasolar.com , psirohiya@gmail.com

