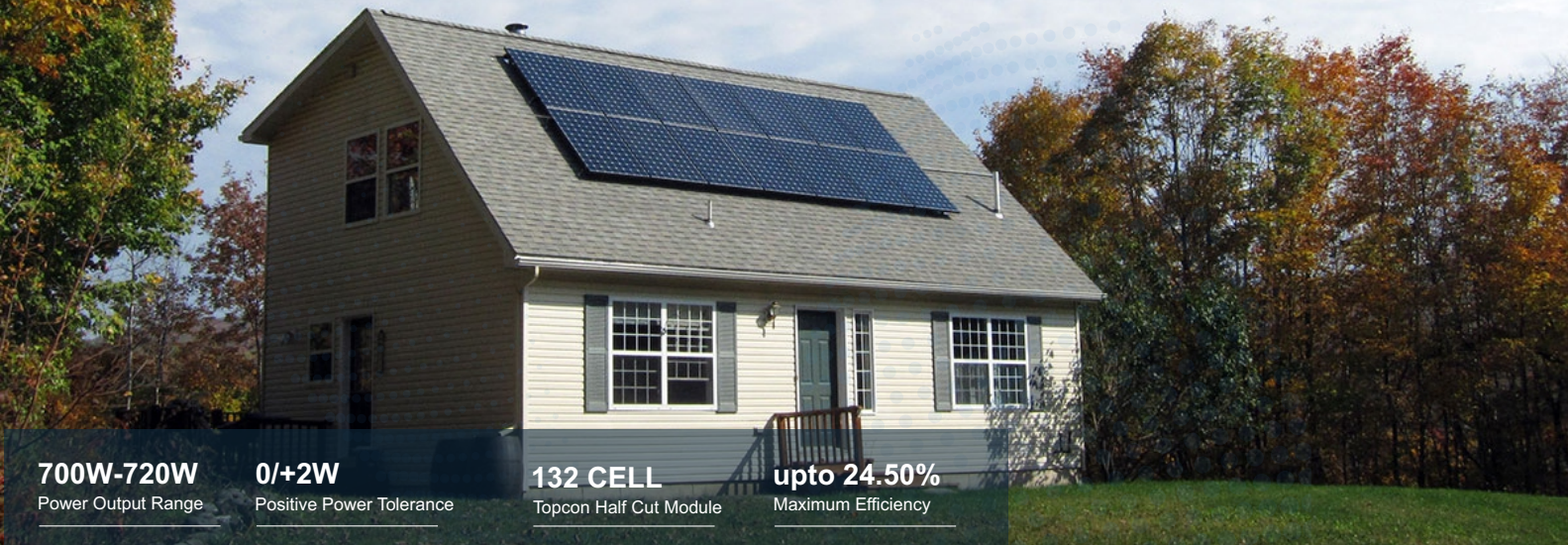


SENZA[®] SOLAR

TOPCON BIFACIAL MODULE

700WP-720WP G2G

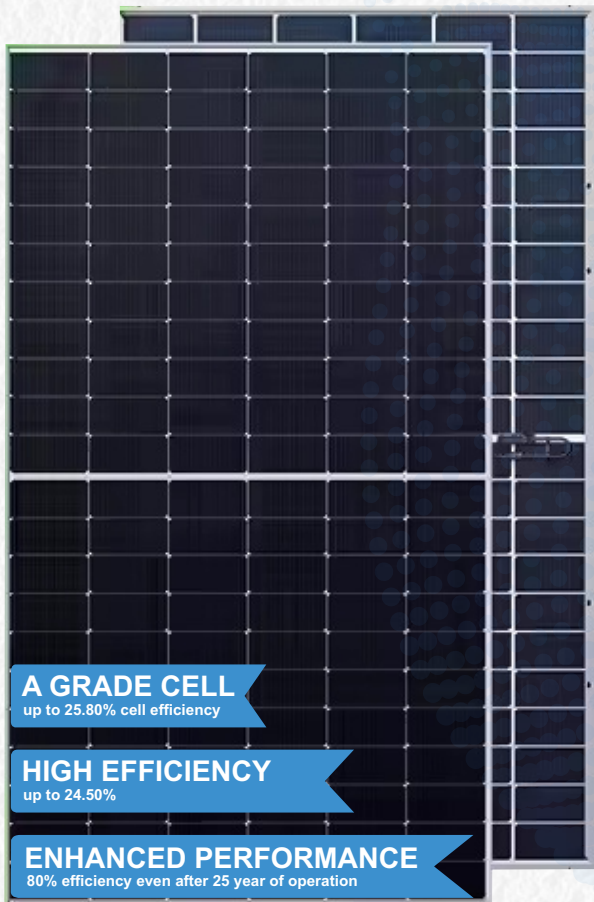


700W-720W
Power Output Range

0/+2W
Positive Power Tolerance

132 CELL
Topcon Half Cut Module

upto 24.50%
Maximum Efficiency



A GRADE CELL
up to 25.80% cell efficiency

HIGH EFFICIENCY
up to 24.50%

ENHANCED PERFORMANCE
80% efficiency even after 25 year of operation

WHY SENZA SOLAR



Withstanding Harsh Environment
Reliable quality leads to a better sustainability even in harsh environment like desert, farm and coastline.



Low-light Performance
Advanced glass and solar cell surface texturing allow for excellent performance in low-light environments.



High Efficiency
High module conversion efficiency (up to 24.50%), through innovative manufacturing technology.



Severe Weather Resilience
Certified to withstand: wind load (2400 Pascal) and snow load (5400 Pascal).



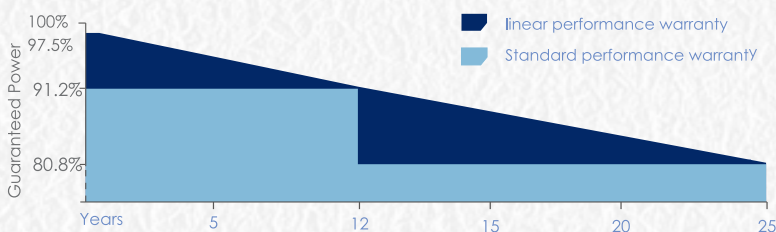
Higher Quality Assurance
100% EL test, providing higher quality assurance



Maximized Energy Harvest
Impedance matching technology eliminates mismatch losses, more power from each module bin.

LINEAR PERFORMANCE WARRANTY

10 Year Product Warranty | 25 Year Linear Power Warranty



Electrical Characteristics

STC	SNS132CMT700Wp-SNS132CMT720Wp				
Maximum Power at STC (Pmax)	700W	705W	710W	715W	720W
Optimum Operating Voltage (Vmp)	40.78V	40.85V	40.98V	41.18V	41.25V
Optimum Operating Current (Imp)	17.22A	17.31A	17.40A	17.46A	17.50A
Open Circuit Voltage (Voc)	46.88V	47.26V	47.52V	47.72V	47.78V
Short Circuit Current (Isc)	18.35A	18.39A	18.41A	18.43A	18.44A
Module Efficiency	22.53%	22.69%	22.85%	23.01%	23.17%
Operating Module Temperature	-40 °C to +85 °C				
Maximum System Voltage	1500 V DC (IEC)				
Maximum Series Fuse Rating	35 A				
Power Tolerance	Positive				

STC: Irradiance 1000 W/m², module temperature 25 °C, AM=1.5;
Tolerance of Pmax is within +/- 3% ;

NMOT					
Maximum Power at NMOT (Pmax)	521W	525W	528W	532W	535W
Optimum Operating Voltage (Vmp)	38.53V	38.35V	38.72V	38.91V	38.98V
Optimum Operating Current (Imp)	13.53A	13.58A	13.65A	13.70A	13.73 A
Open Circuit Voltage (Voc)	44.25V	44.61V	44.85V	45.04V	45.28V
Short Circuit Current (Isc)	14.39A	14.41A	14.42A	14.44A	14.45A

NMOT: Irradiance 800 W/m², ambient temperature 20 °C, AM=1.5, wind speed 1 m/s.

MODEL	700W	705W	710W	715W	720W
10% BIFACIAL GAIN	770.0W	775.5W	781.0W	786.5W	792.0W
20% BIFACIAL GAIN	840.0W	846.0W	852.0W	858.0W	864.0W
30% BIFACIAL GAIN	910.0W	916.5W	923.0W	929.5W	936.0W

Temperature Characteristics

Nominal Module Operating Temperature (NMOT)	42 ± 2 °C
Temperature Coefficient of Pmax	-0.320%/°C
Temperature Coefficient of Voc	-0.260%/°C
Temperature Coefficient of Isc	0.046%/°C

Mechanical Characteristics

Solar Cell	105mmx210 mm
No. of Cells	132 (6 × 22)
Dimensions	2384 × 1303 × 35 mm
Weight	38.50 kgs
Front Glass & Back Glass	2.0 mm & 2.0 mm
Frame	Anodized aluminium alloy
Junction Box	IP68 rated
Output Cables	4.0 mm ²
Connectors	Mc4

Packing Information

Modules Per Pallet	30 Modules
Total Pallet	
Total Modules 40 Ft HQ container	

Note:
 • The specifications in this datasheet are subject to change without any notice.
 • The electrical data given here is for reference purpose only.
 • Please contact our sales team for any customized solutions.
 • Please read safety and installation instructions before using the product.
 • Subject to Bangalore jurisdiction.

SENZA SOLAR

SOLARMINT ENERGIES PRIVATE LIMITED
 FORMERLY : SUN N SAND EXIM (INDIA) PVT LTD
 Plot No.-106, Sector-16, HSIIDC, Bahadurgarh, Haryana 124507
 Whatsapp & Toll Free : +91-8222875753 , 18001206635
 Website: www.senzasolar.com
 Email: info.sns@senzasolar.com , psirohiya@gmail.com

