

S 43 SX III

Truck Mounted
Concrete Boom Pump



RECORD BREAKING ENGINEERING





The S 43 SX III from SCHWING

Ease without compromises

Experience in reality the concrete pumping product that comes with the exceptional feature known as the RZ-folding system to provide greater flexibility, remarkable manoeuvrability and phenomenal stability. With these out of the ordinary features, be rest assured of its longer service life, higher resale value, excellent fuel efficiency and the lowest ever maintenance cost without any compromise on its overall efficacy and productivity at all challenging job sites.

The S 43 SX III from SCHWING

Advantages and benefits at a glance

Boom

Boom arms 2, 3 and 4 of the S 43 SX III feature a knuckle angle of 185°, and can be operated intuitively thanks to their roll-fold geometry. Maximum flexibility is reached by arm 5 with its Z-fold and the wide angle of 270°. The boom of the S 43 SX III is thus extremely flexible in use and also easy to operate.



Pump kit

Only the SX outriggers by SCHWING allows the longstroke pump kit P2023 with 2.50 m - long pumping cylinders to be used in this class of machine. Advantage: 15% less strokes than with pump kits otherwise available in this class.



Open hydraulic system

The open hydraulic system of the S 43 SX III converts the engine power efficiently into pump power with little loss. Thus, the usual practice output rates can be realized with a fuel-saving engine speed



SX outriggers

The SX outriggers developed by SCHWING combines high torsional rigidity and excellent stability with minimum space requirement. The protected piston rod and internally laid hydraulic cables prevent damage and reduce service costs.



Wheelbase < 1,800 mm

Concrete valve

The legendary low wear ROCK valve with its optimal geometry for low-friction concrete flow ensures low service and operating costs. Being fast and easy to clean, the S 43 SX III is quickly ready for the next job.



Supply control

The water box can be filled and emptied, and the water pump, agitator, spray hose, high pressure cleaner and compressor, all controlled via the standardised supply control. This is the standard for all SCHWING truck-mounted concrete pumps for greater clarity and ease of operation.



Remote control SC 30

The light weight, easy to use and comfortable SC 30 helps minimise fatigue, allowing the operator to focus on the job for extended periods. The powerful batteries guarantee an operating time of at least 8 hours.



VECTOR control

The machine operator can inspect machine data, operating conditions and settings on S 43 SX III, changing various parameters, all through the intuitive VECTOR control. The integrated diagnostic system ensures safe operation and also reminds the operator when maintenance is necessary.



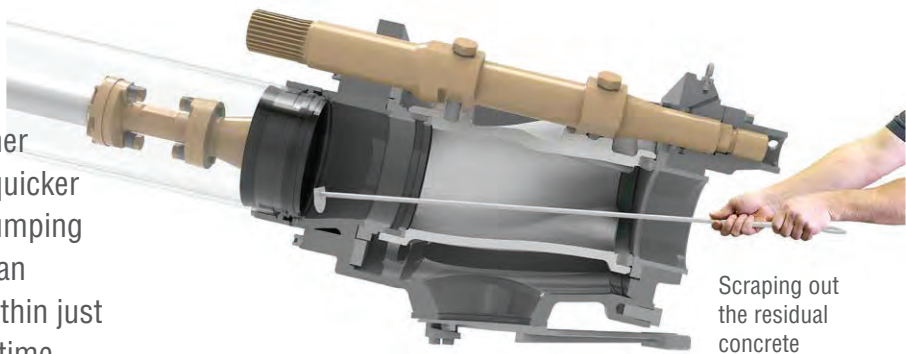
S 43 SX III Truck-mounted concrete pump

Advantages and benefits in detail

The ROCK

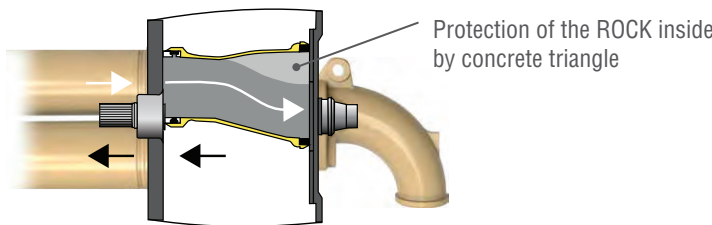
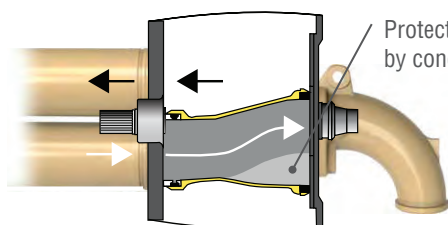
Clean faster with less water.

Due to its straight design, in comparison to other concrete valves, the ROCK valve is easier and quicker to clean. It also provides a direct view of the pumping pistons in the delivery cylinder. The pump kit can therefore be cleaned easily and conveniently within just two strokes. This saves water and reduces the time needed for cleaning.



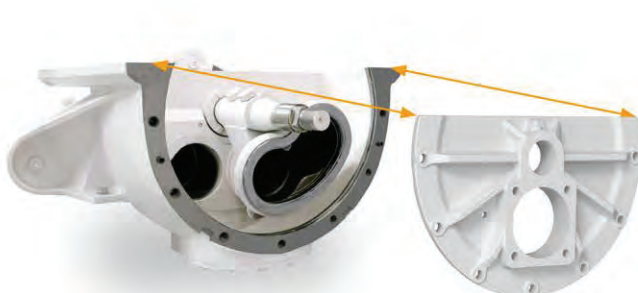
Intelligent wear protection.

The wear in the concrete valve is particularly high as the concrete is fed into the outlet at high pressure. In order to minimize this wear, at the most heavily loaded point of the ROCK concrete does not rub on steel, but rather on concrete. This is because the intelligent design of the ROCK leads to the formation of a concrete triangle after each shift. Protected by this concrete layer, the ROCK has a significantly longer service life than other concrete valves. For noticeably more profit per m³.



Easy maintenance.

The ROCK valve not only has a significantly longer service life than other concrete valves, it is also easier to maintain. After removing the housing cover, the wear parts are easily accessible and can be replaced quickly and safely. Time-consuming adjustment work is not required after replacement. The ROCK valve's 15 wearing parts is only half the number used in other concrete valves. The maintenance of the ROCK valve: simple, fast and safe.



The long-stroke pump kit P2023

Less wear, more profit.

Only the SX outrigger from SCHWING enables the installation of a pump kit with 2.00 m long delivery cylinders in this class. For a standard practice delivery rate of almost 60 m³/h, the long stroke pump kit requires no more than 12 strokes per minute. The wear costs of the S 43 SX III are thus reduced to an unrivaled low level and ensure significantly more profit per m³.



The boom

More rotation for quicker positioning.

The turret of other truck-mounted concrete pumps in this class can often only be rotated in one direction by 365°. This is not the case for the S 43 SX III from SCHWING: its turret can be rotated in both directions by 365°, thus providing significantly more flexibility and options in use.

2 x 365°

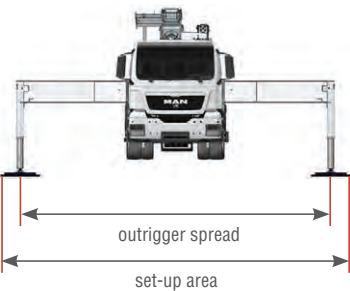
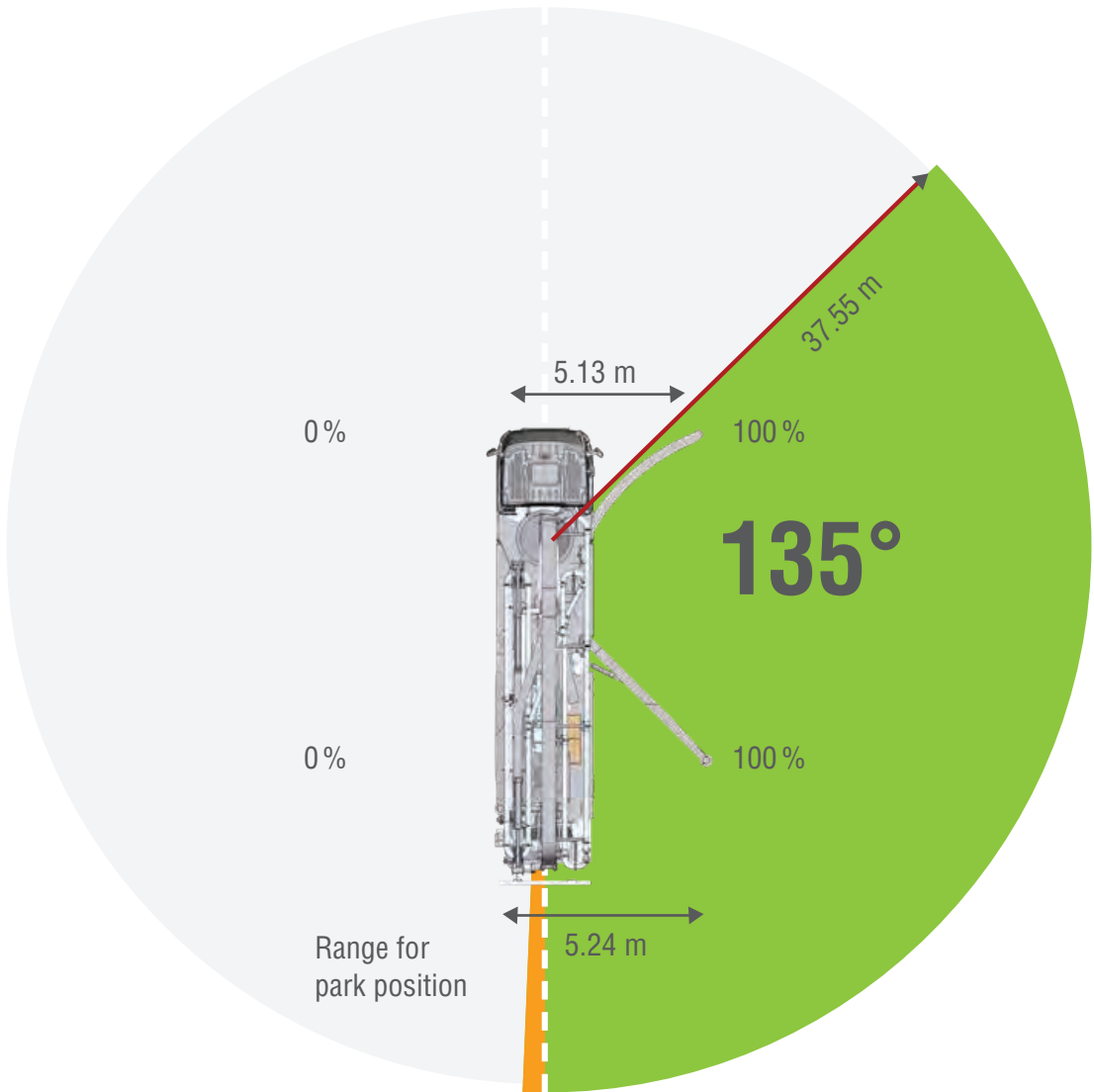


EASy



The outrigger systems EASY extend the range of applications of the S 43 SX III. With EASY, the concrete pump can be safely supported on one side, if required. Thereby covering a working range of 135°. In this way,pump applications can be achieved with the maximum working safety even in difficult, restricted spaces , More flexibility for more safety.

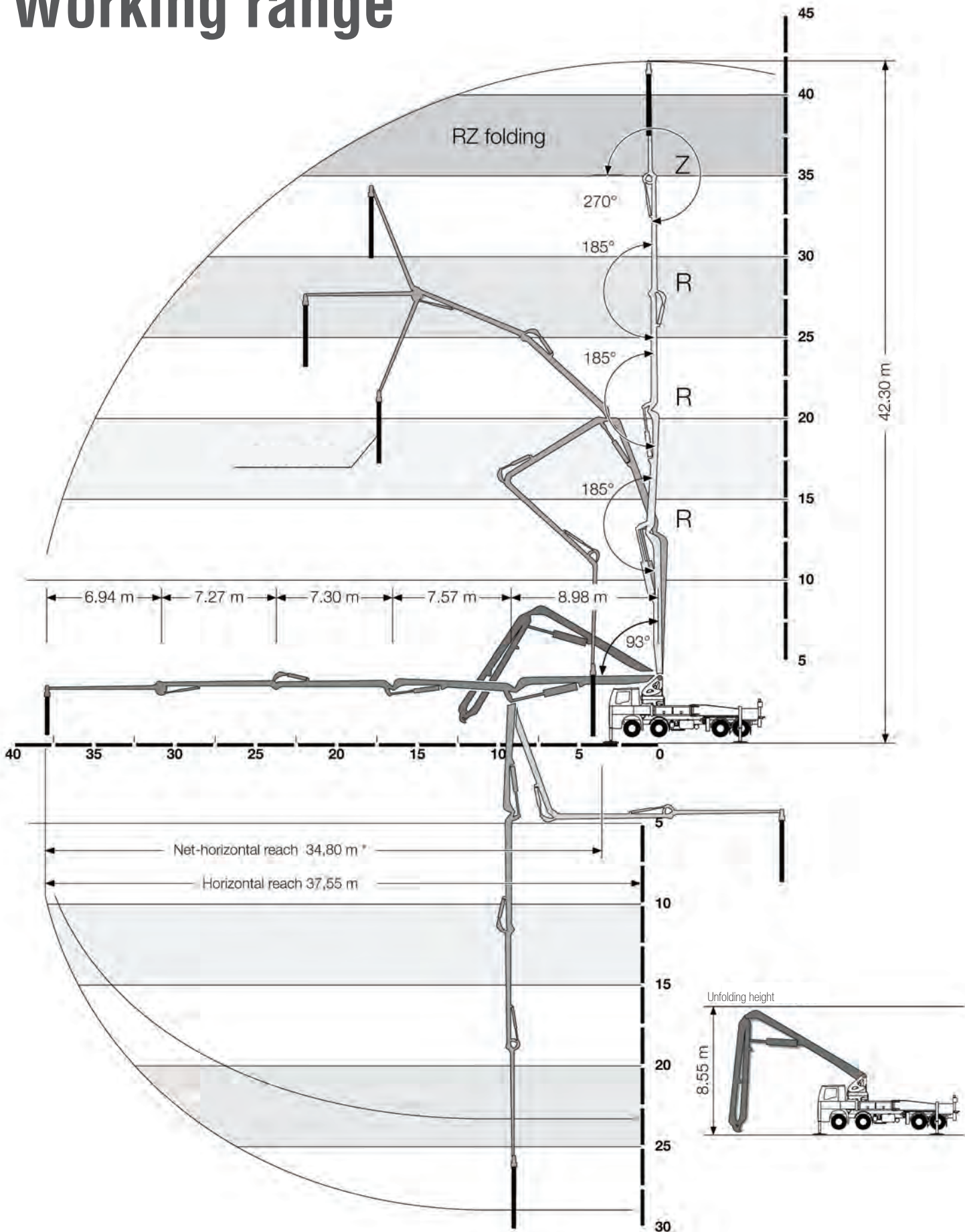
EASy



The outrigger spreads as specified are measured from the centre of the outrigger leg. Any cribbing or underlay timbers must be taken into account when determining the required set-up area.

S 43 SX III Truck-mounted concrete pump

Working range

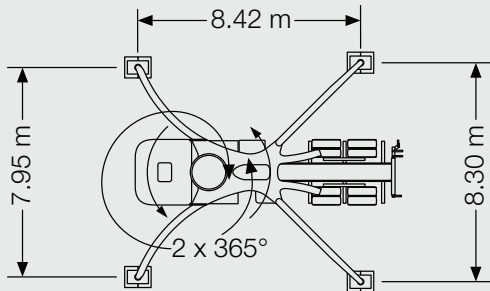


* from front of outriggers

S 43 SX III Truck-mounted concrete pump

Technical data

Performance		
Pump kit		P 2023-380
Drive	l/min	380
Delivery cylinders	mm	230 x 2,000
Concrete output max.	m³/h	96/160
Pressure on concrete max. bar		85
Stroke rate max.	1/min.	19/32
Concrete valve		B-ROCK
Hopper capacity		600 L
Hydraulic system		open system
Design		
Hydraulic tank	l	548
Boom		43 RZ
Delivery line		DN 125
Vertical reach	m	42.30
Reach depth	m	29.90
Horizontal reach	m	37.55
Net horizontal reach	m	34.80 (from front of outriggers)
Number of boom sections		5
Height of the inflexion points	m	4.24 / 13.22 / 20.79 / 28.09 / 35.36
Slewing range		2 x 365°
Unfolding height	m	8.55
Support		
Outrigger width, front	m	7.95
Outrigger width, rear	m	8.30
Outrigger load, front	kN	240
Outrigger load, rear	kN	240
Miscellaneous		
Water tank	l	610



* other chassis possible



RECORD BREAKING ENGINEERING

SCAN ME

Online Enquiry



For more complete information on **SCHWING's** products, services and industry solutions, visit us at www.schwingstetterindia.com. Materials and specifications are subject to change without notice. Featured machines in photos may include additional equipment. See your SCHWING's Branch/dealer for available options



SCHWING Stetter India Private Limited

Regd., Corporate Office & Works:
F71, Sipcot Industrial Park, Irungattukottai
Sriperumpudur, Kancheepuram,
Tamilnadu - 602117
Tel No./WhatsApp: - +91-9176606120
Email: - Enquiry@schwingstetterindia.com



Your Nearest Branch :